



Sports Art Industrial Co., Ltd. (Headquarter)

#11, Gong Huan Road,
Tainan City, Taiwan
T: 886 6 3840888
F: 886 6 3840999
info@sportsart.com.tw

Sports Art America Inc.

19510 144th Ave. N.E., Suite A-1,
Woodinville, WA 98072
T: +1 425 4819479
F: +1 425 4888155
info@gosportsart.com

Sports Art Fitness UK Ltd.

Unit 2, 3 Charnwood Business Park,
North Road, Loughborough,
LE11 1LE, England
T: +44 1509 274440
ukinfo@gosportsart.com

Sports Art Europe, Middle East & Africa

Strada Cantonale 42, Ch-6534 San Vittore,
Switzerland
T: +41 91 8273908
F: +41 91 8273910
giorgio365@ticino.com

Sports Art China

Room 2202, BLDG. A, Huapu Garden,
Dongzhimen South Street, No. 9,
Dongcheng District Beijing, 100007 China
T: +86 10 84094122/84094123
F: +86 10 84094121

DS972 Functional Trainer Owner's Manual



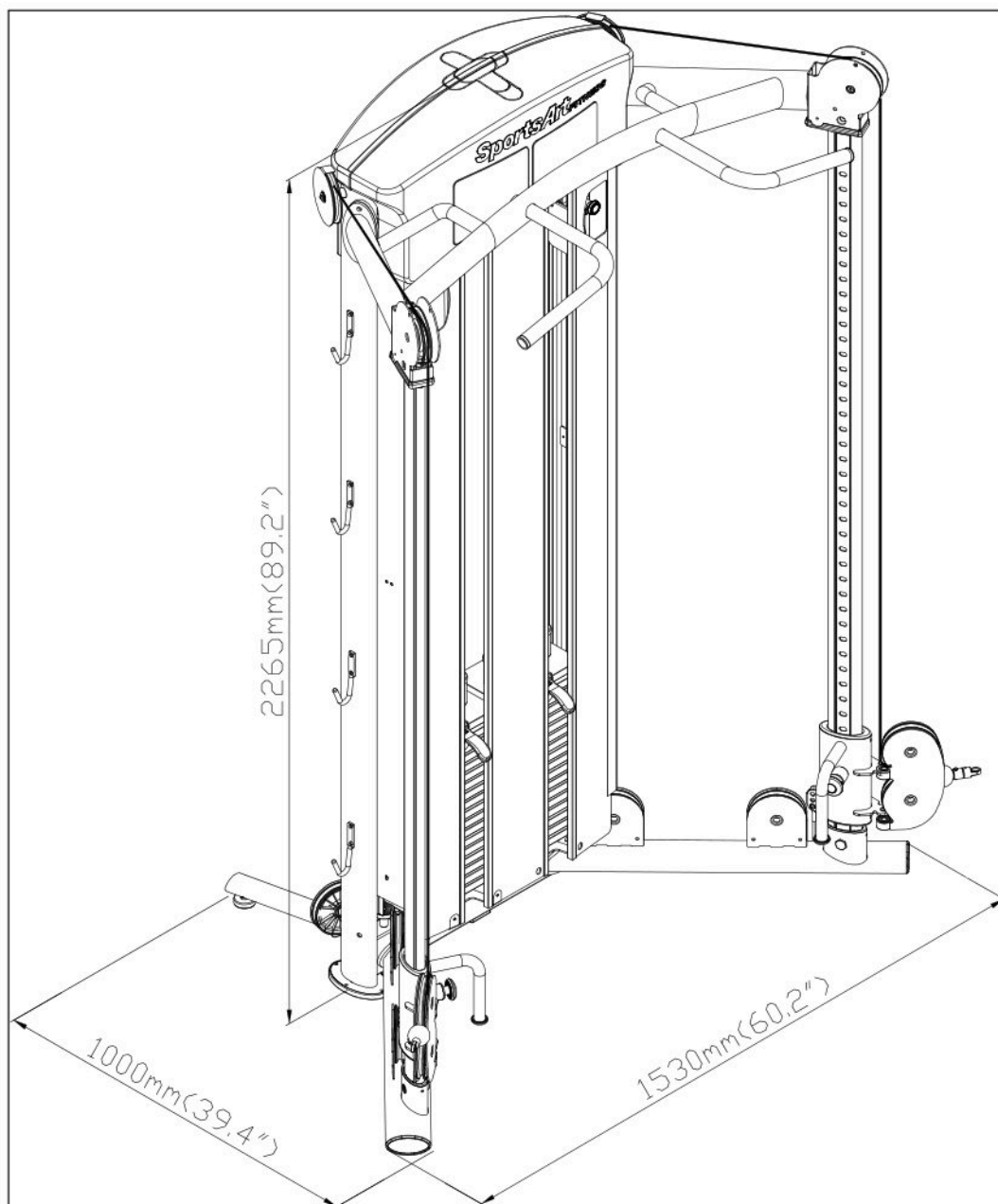
DS972 OWNER'S MANUAL CONTENTS

1. INTRODUCTION	2
2. SAFETY PRECAUTIONS	3
3. LIST OF PARTS	4
4. ASSEMBLE THE PRODUCT	7
STEP 1 Install the Top Support Frame	7
STEP 2 Install the Support Tube and the Connector	8
STEP 3 Install the Adjustment Pulley and the Adjustment Tube	9
STEP 4 Install the Pulleys	10
STEP 5 Install the Weight Plates	11
STEP 6 Apply the Weight Stack Sticker	14
STEP 7 Install Front Cover Set Brackets	15
STEP 8 Install Front/Rear Cover Set Plate	17
STEP 9 Install the Cable	18
STEP 10 Install the Rear/Front Cover	19
STEP 11 Install the Top Front/Rear Cover	21
STEP 12 Install the Hooks	22
STEP 13 Level and Secure the Product	23
5. OPERATE THE PRODUCT	24
OPERATION Test the Product	24
OPERATION Operate the Product	26
OPERATION Exercising Instructions	27
OPERATION Safety Operating Area	30
6. MAINTENANCE	31
MAINTENANCE Safety Precautions	31
MAINTENANCE Guide Rod Cleaning and Lubricating	32
MAINTENANCE Schedule	33
MAINTENANCE Task List	34
MAINTENANCE One-Year Maintenance Log	35
7. ACCESSORIES	36
ACCESSORIES Options	36
8. CONSIGNES DE SÉCURITÉ IMPORTANTES	37

1. INTRODUCTION

Congratulations on the purchase of a high quality SportsArt product, the DS972 Functional Trainer. Constructed of high quality materials and designed for years of reliable performance, this product was made for full commercial use.

Before this product is assembled or operated, we recommend that you familiarize yourself with this manual. Understanding the correct assembly and operation of this product will help ensure that exercisers obtain their fitness goals safely and successfully.



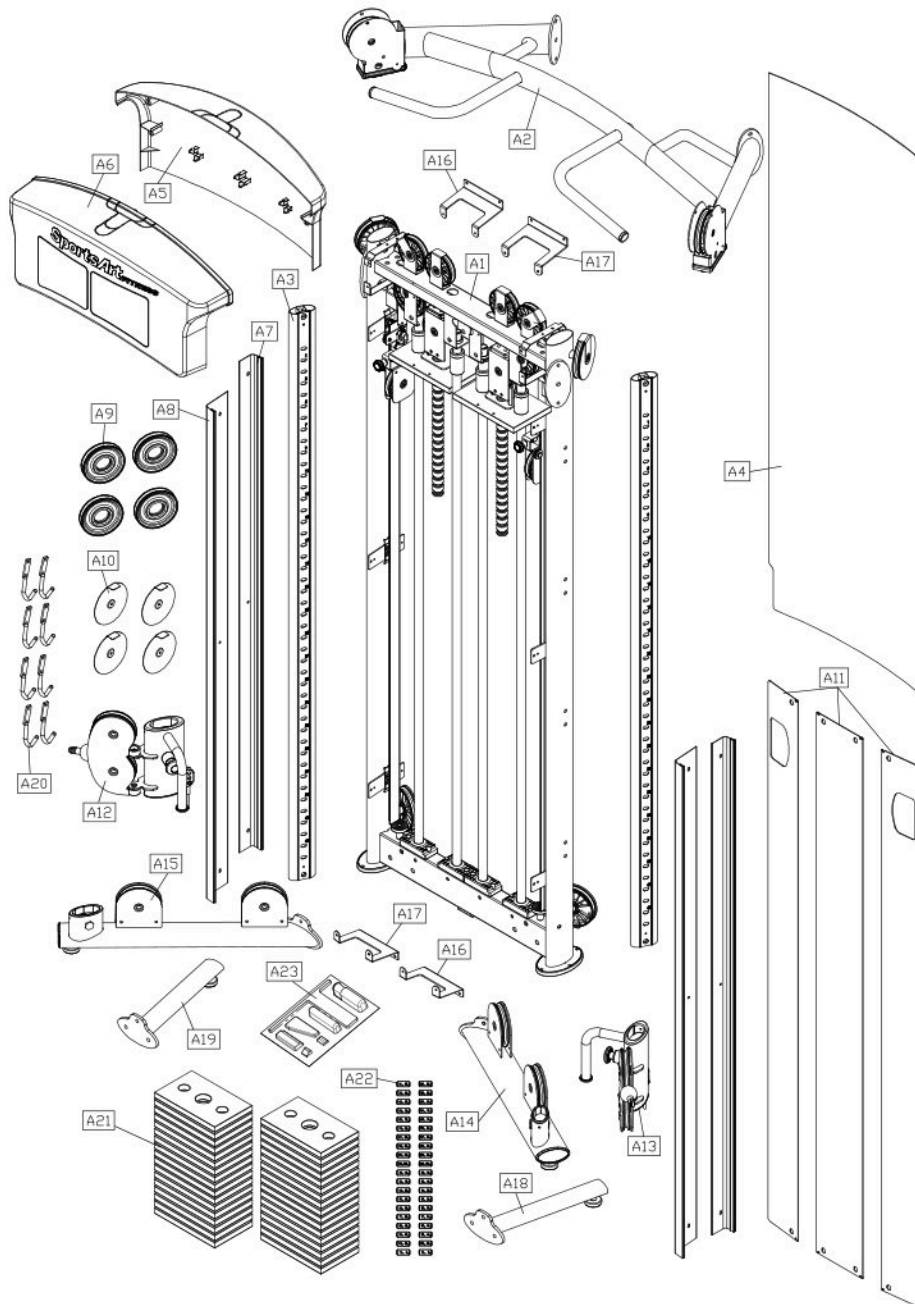
2. SAFETY PRECAUTIONS

This product was designed and built for optimum safety. However certain precautions apply during the use of this product. Please note the following safety precautions:

- Please read the entire manual before assembly and operation. Make sure the product is installed and operated as instructed in this manual.
- Assemble and operate the product on a solid, level surface. Do not use outdoors or near water, including pools and saunas.
- Check the product before every use. Make sure all parts are assembled, and all fasteners are tightened. Do not use the product if it is disassembled in any way.
- Wear proper workout clothing. Do not wear loose clothing. Do not wear shoes with leather soles or high heels. Tie all long hair back. Do not go barefoot on this product.
- Keep away from moving parts. Moving parts may or may not stop immediately if an object becomes caught or impedes normal motion.
- Use this product only for its intended purpose as described in this manual.
- Be careful when mounting and dismounting the unit.
- Never operate this product if it has been damaged in any way. If it is not working properly, or has been dropped or damaged, contact a service technician for repairs.
- Do not use accessories or parts that are not specifically recommended by the manufacturer (SportsArt) . Such parts might cause injuries or cause the unit to fail and void the warranty. We will not be responsible for any safety issue that arises due to the misuse of accessories or parts. At the same time, we will terminate the warranty terms of this equipment.
- This product is not intended for use by persons (including children 12 or younger) with reduced physical, sensory, or mental capabilities, or by people who are otherwise deficient in product knowledge or experience. If such people use this product, they should be given training and be supervised at all times by someone responsible for their safety.
- Children 12 or younger should be supervised to ensure that they do not play on or near the product.
- Maintenance and repair must be performed by trained service personnel only.

CAUTION: If you feel any pain or any abnormal sensations, STOP YOUR WORKOUT and consult your physician immediately. Work within your recommended exercise level. DO NOT work to exhaustion. Before beginning any exercise program, you should consult with your doctor. It is recommended that you undergo a complete physical examination.

3. LIST OF PARTS



Assembly Parts					
No.	Name	Qty.	No.	Name	Qty.
A1	Main frame	1	A7	Rear cover set plate	2
A2	Top support frame	1	A8	Front cover set plate	2
A3	Height adjusting tube	2	A9	Pulley	4
A4	Rear cover	1	A10	Pulley support plate	4
A5	Top rear cover	1	A11	Front cover	3
A6	Top front cover	1	A12	Left adjustment pulley assembly	1

Assembly Parts					
No.	Name	Qty.	No.	Name	Qty.
A13	Right adjustment pulley assembly	1	A19	Right rear support leg	1
A14	Left connector assembly	1	A20	Hook	8
A15	Right connector assembly	1	A21	Weight stack	36
A16	Front cover set bracket A	1	A22	Weight stack sticker	1
A17	Front cover set bracket B	1	A23	Hardware kit	1
A18	Left rear support leg	1			

Components in the Hardware Kit				
No.	Name	Qty.	Specification	Notes
12	Inner hex screw	6	M6*P1.0*L20	
	Washer	6	D18.6*d11*t1.7	
	Bushing	6	D19*7.8	
13	Mushroom top Phillips screw	8	M5*L12	
14	Screw socket	8		
15	Floor fixing bracket	2		
	Double open end wrench	2	13mm*17mm	
	L-shape hex wrench	1	M4	
	L-shape hex wrench	2	M5	
	L-shape hex wrench	1	M6	
	Screwdriver bit	1	Phillips and flat	
	Screwdriver handle	1	Green	

Components on the Product			
No.	Name	Specification	Notes
30	Hex head screw	M10*P1.5*L35	
	Spring washer	M10	
	Washer	D19*d10.2*t3	
31	Hex head screw	M10*P1.5*L75	
	Spring washer	M10	
	Washer	D19*d10.2*t3	
32	Set pin	D20*d15*L48	
	Flat washer	D26*d8.3*t3	
	Mushroom top inner hex screw	M8*P1.25*L20	

No.	Name	Specification	Notes
33	Mushroom top inner hex screw	M6*P1.0*L12	
	Spring washer	M6	
	Flat washer	D20*d6.3*t1.5	
34	Inner hex screw	M8*P1.25*L80	
	Flat washer	D17*d8.3*t2	
	PU tube	ØD12*d8*L61	
	Nyloc hex lock nut	M8	
35	Mushroom top inner hex screw	M6*P1.0*L12	
	Flat washer	D13*d6*t1.0	
36	Mushroom top inner hex screw	M6*P1.0*L15	
	Flat washer	D13*d6*t1.0	
37	Inner hex screw	M6*P1.0*L30	
	Nyloc hex lock nut	M6*P1.0*6	
	Rubber ball		
	Stopper terminal casing		
	Handle Ring		
39	Mushroom top inner hex screw	M6*P1.0*L15	
40	Hex head screw	M10*P1.5*L75	
	Spring washer	M10	
	Washer	D19*d10.2*t3	
	Cap nut	M10*P1.25	

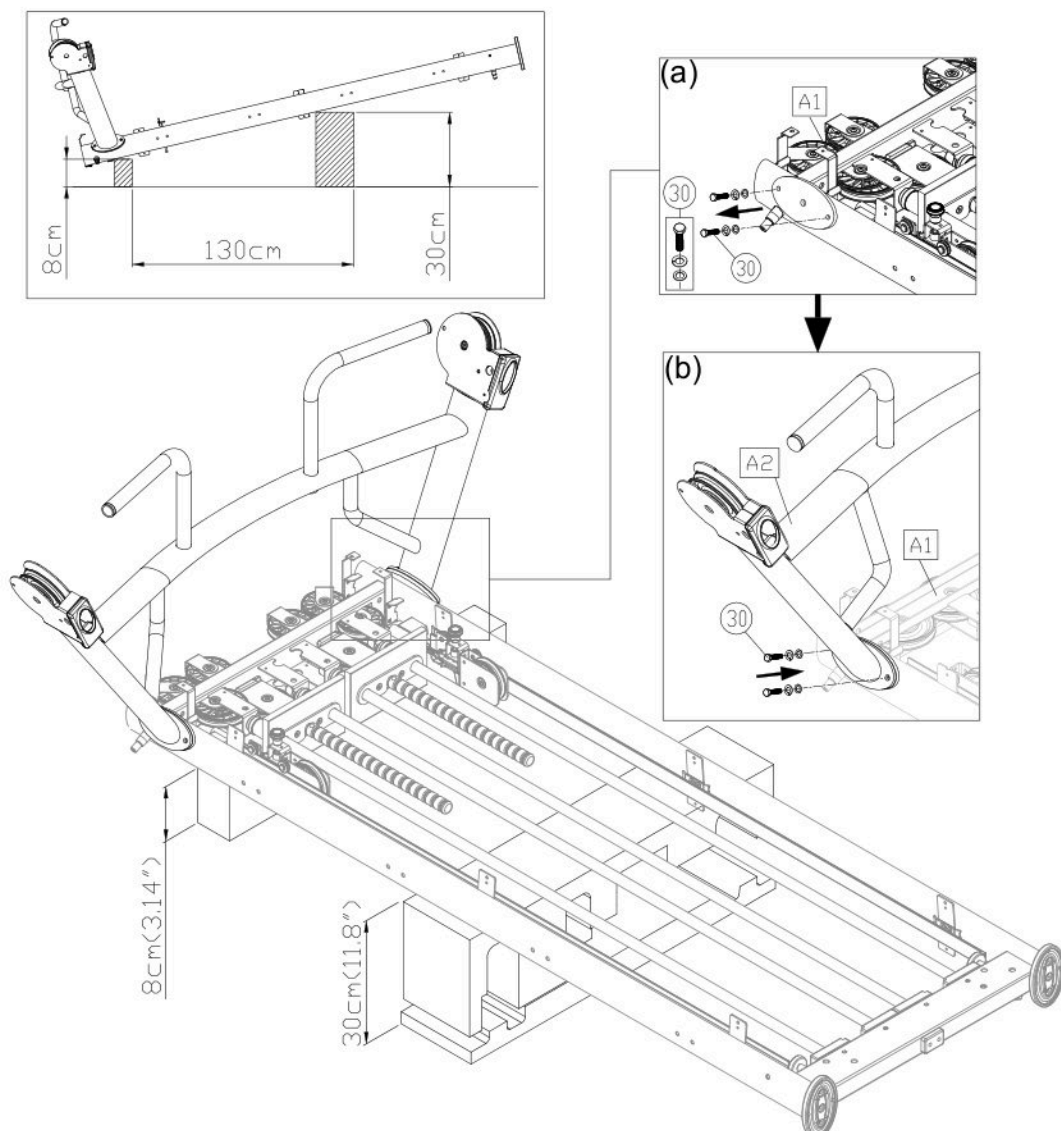
4. ASSEMBLE THE PRODUCT

Follow instructions below to assemble this product. Note that in this manual the words “left” and “right” are used to refer to the product and its parts. As such, these designations correspond to the “left” and “right” sides of a person in position to exercise on this product. Also, for brevity, the word “screws” is used where screws, washers, and other hardware may be involved.

STEP 1 Install the Top Support Frame

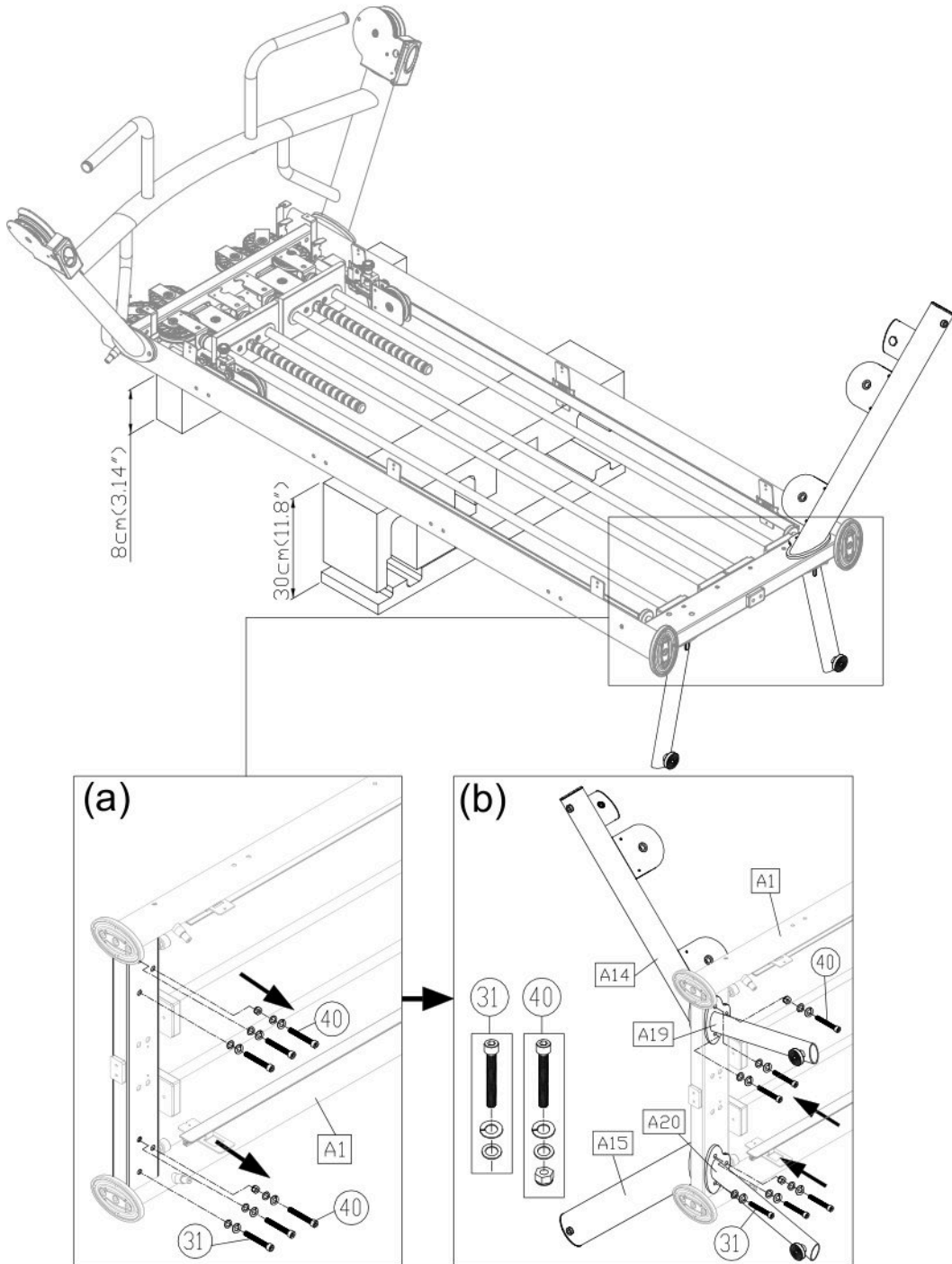
Before beginning the assembly process, Please elevate the main frame with packaging styrofoam to avoid any damages caused by pulleys colliding with the ground. The machine front end should elevate about 8cm (3.14”) and the middle end should elevate about 30cm (11.8”), so there is sufficient space to assemble the rear foot support leg.

- (a) Remove screws (30) from the main frame (A1).
- (b) Attach the top support frame (A2) onto the main frame (A1), use screws (30) to secure the assembly.



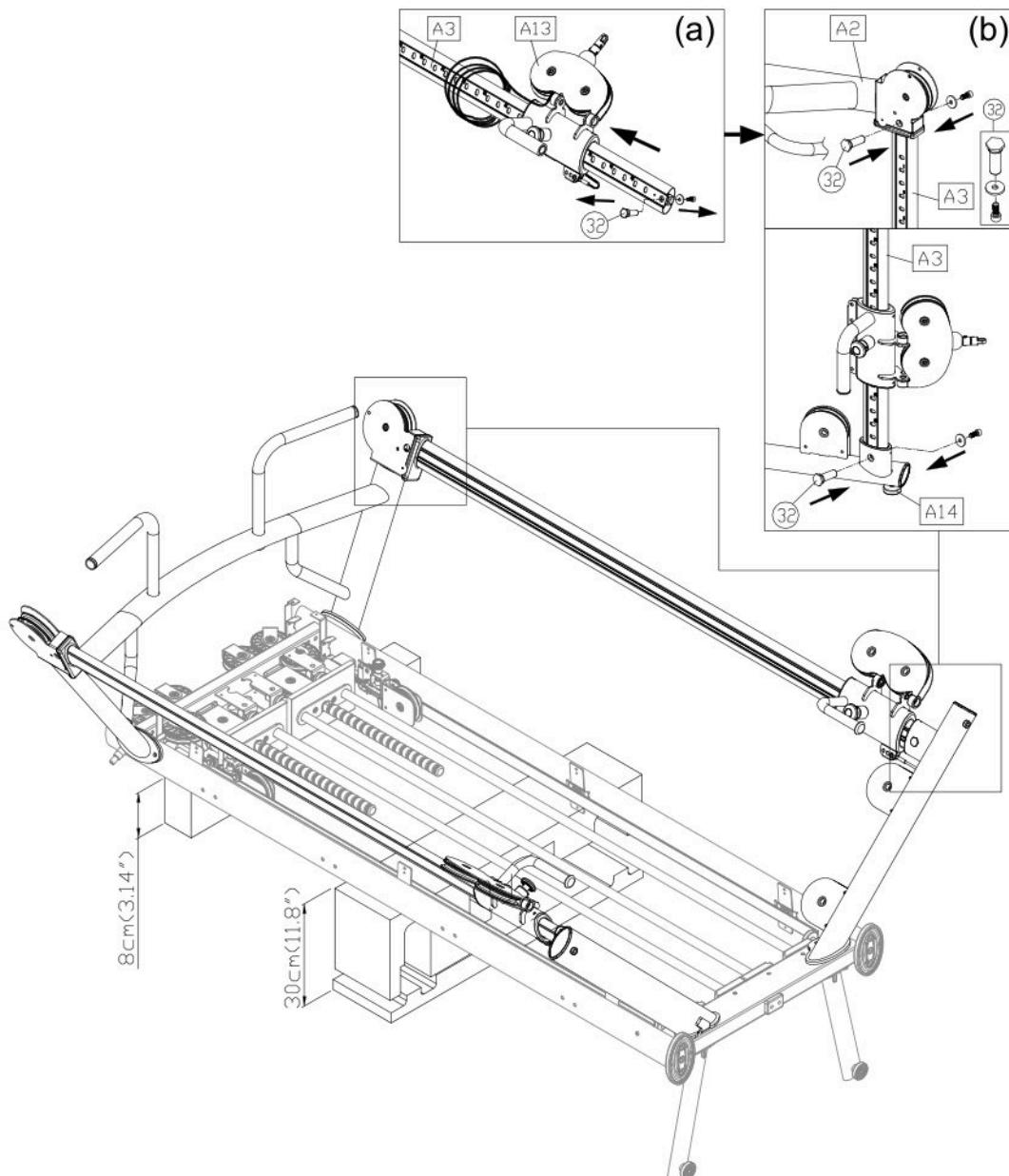
STEP 2 Install the Support Tube and the Connector

- (a) Remove screws (31) (40) from the main frame (A1).
- (b) Attach both connector assembly (A14) (A15) and the rear support legs (A19) (A20) to the main frame (A1). Use screws (31) (40) to secure the whole assembly.



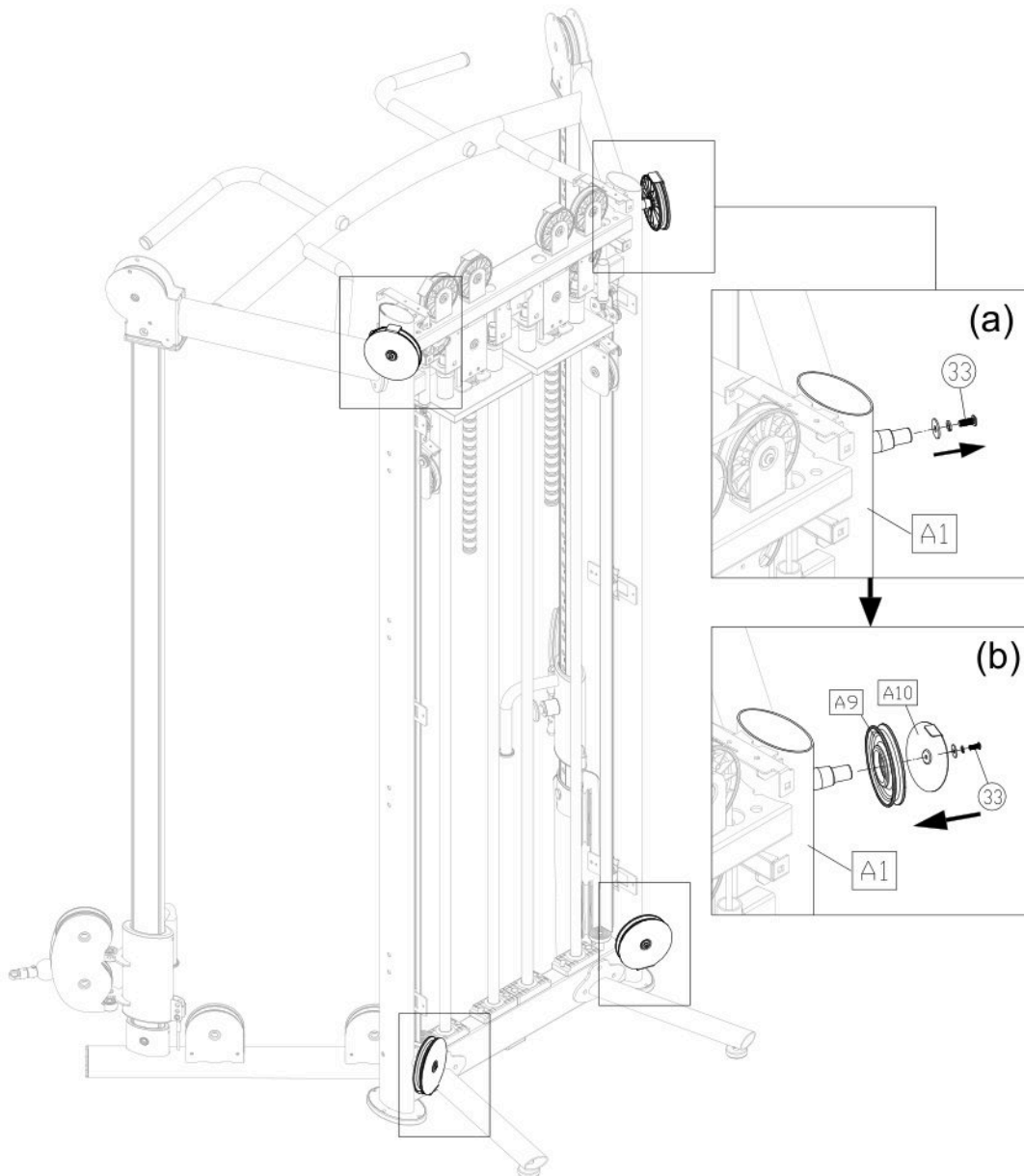
STEP 3 Install the Adjustment Pulley and Adjustment Tube

- (a) First, remove screws (32) from the adjustment tube (A3), and then slide both adjustment pulley assembly (A12) (A13) onto each height adjustment tube (A3).
- (b) Attach each height adjustment tube (A3) onto the top support frame (A2) and both connector assembly (A14) (A15) at the bottom. Use screws (32) to secure the assembly, and make sure all the screws are fastened before standing up the machine.

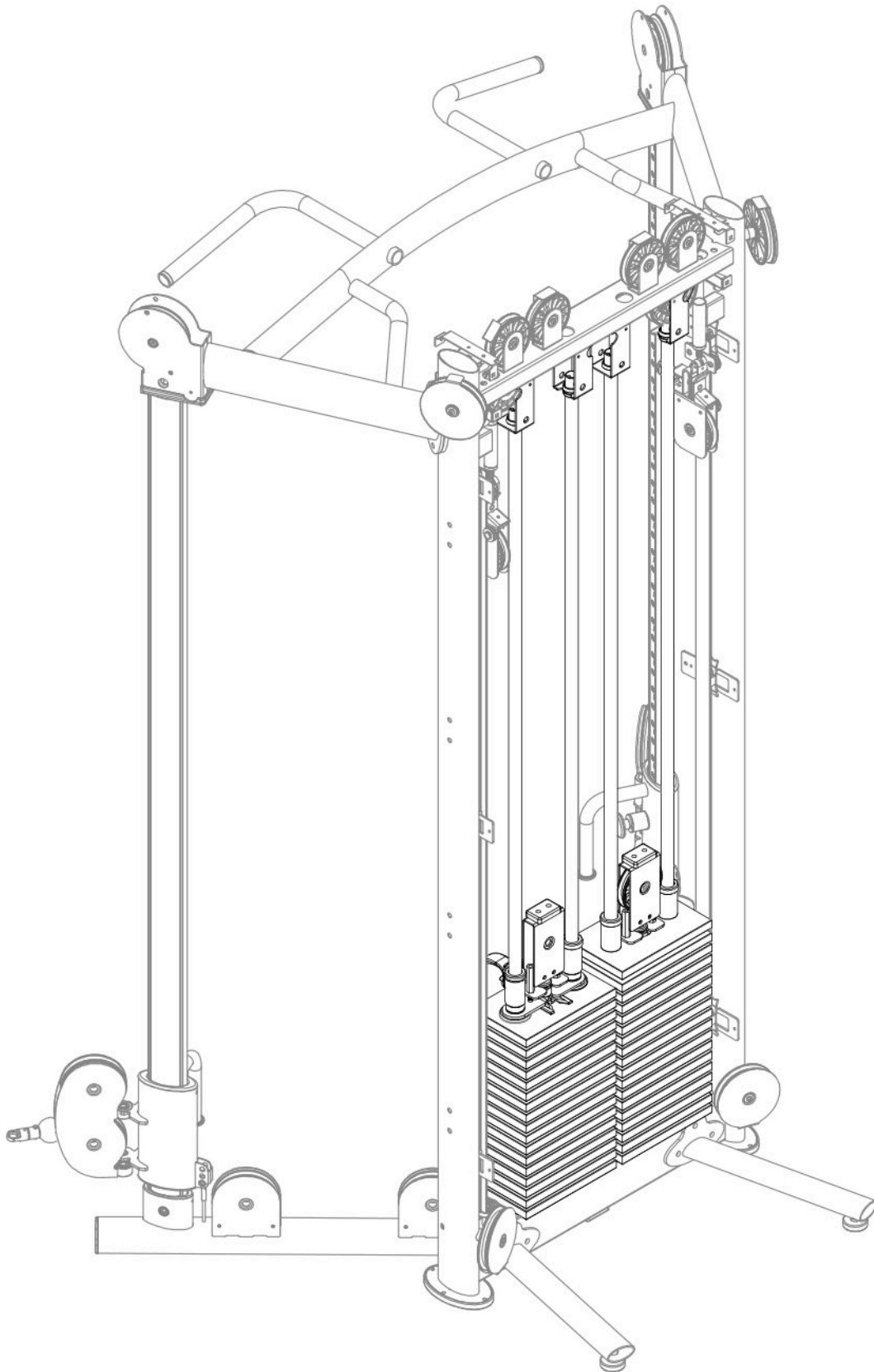


STEP 4 Install the Pulleys

- (a) Remove screws (33) from the Main Frame (A1).
- (b) Assemble the pulley assembly with pulley (A9) and pulley plate (A10).
Use screws (33) to secure the assembly to the main frame (A1).



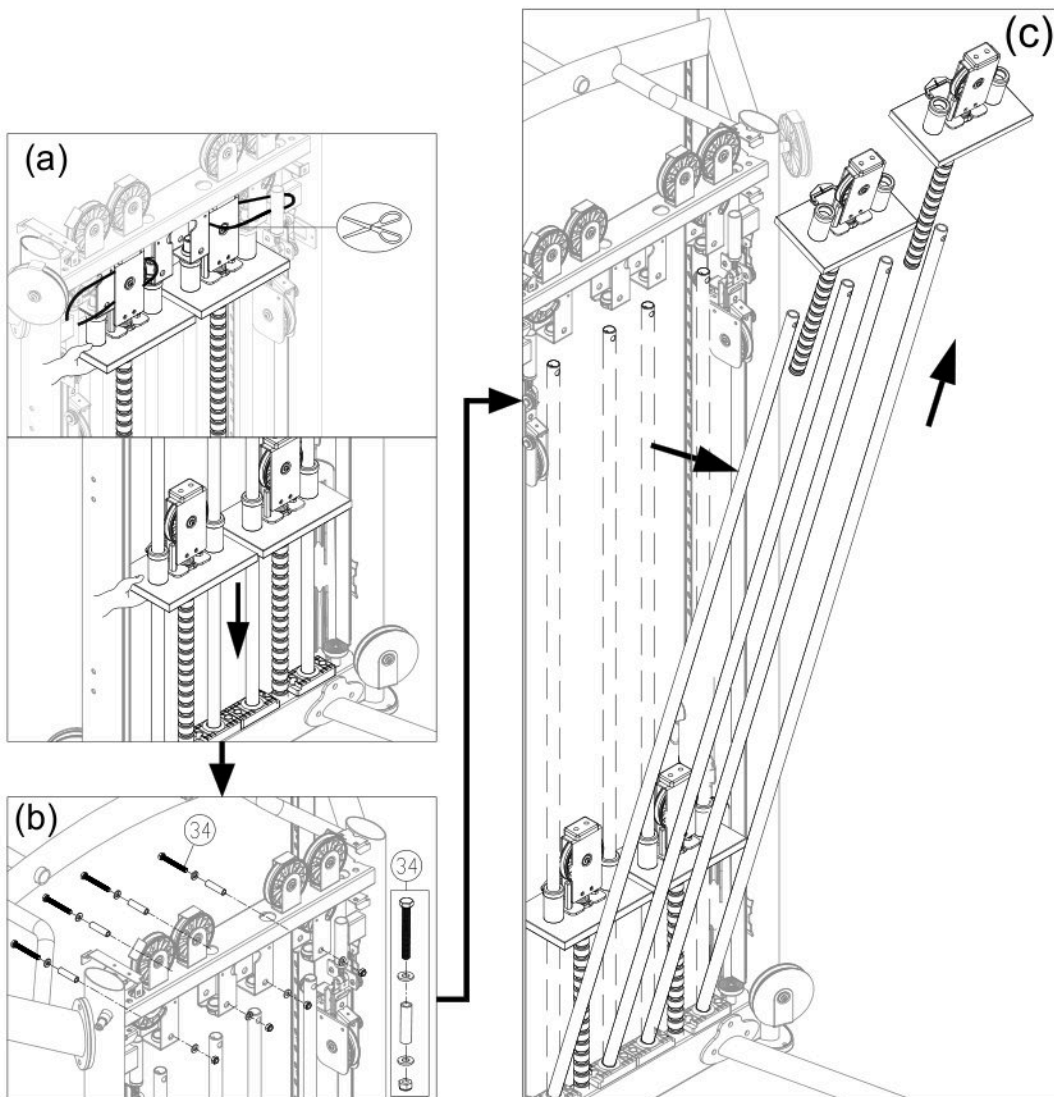
STEP 5 Install the Weight Plates



STEP 5 Install the Weight Plates (Continued)

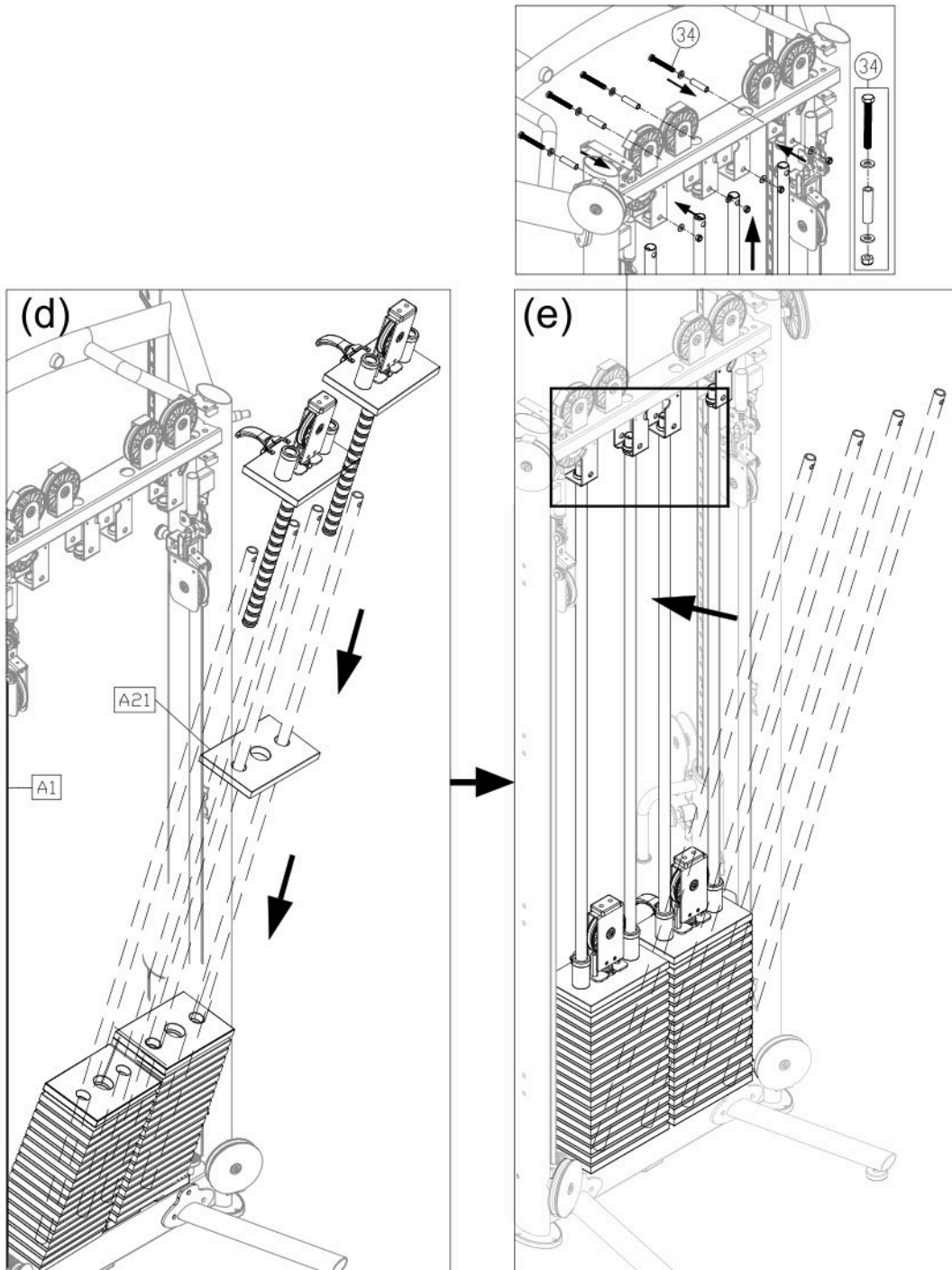
(Note: When one side of the weight plates is installed completely, follow the same procedure to install the other side.)

- (a) Hold the upper stack plate and then cut the zip tie. Gently lower the upper stack plate into place.
- (b) Remove screws (34) that secure the guide rods to the top of the weight stack frame, and then set the guide rod downward into place.
- (c) Tilt the guide rod backward and then lift the upper stack plate off the guide rods as shown. (Note: Carefully set the upper stack plate aside.)



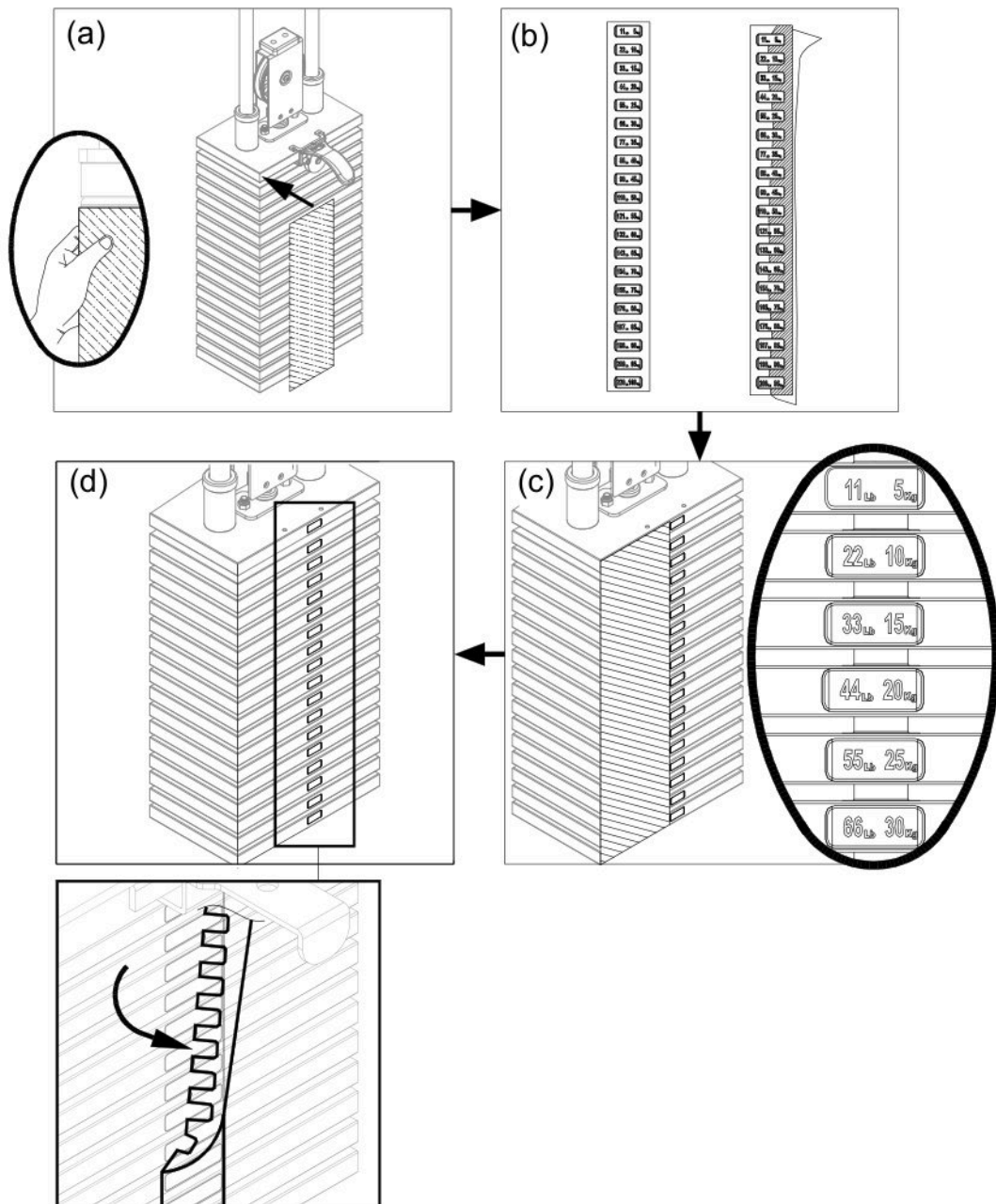
STEP 5 Install the Weight Plates (Continued)

- (d) Insert weight plates (A21) into place on the guide rods one at a time. Once complete, slide down the upper stack carriage on top of the weight stack. (Note: The convex side faces up.)
- (e) Tilt the guide rods back into place and then lift them up to their mounting position. Use screws (34) to secure the assembly.



STEP 6 Apply the Weight Stack Sticker

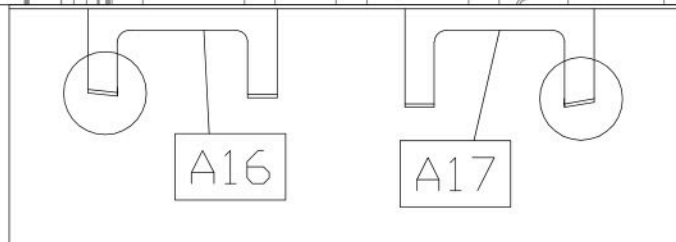
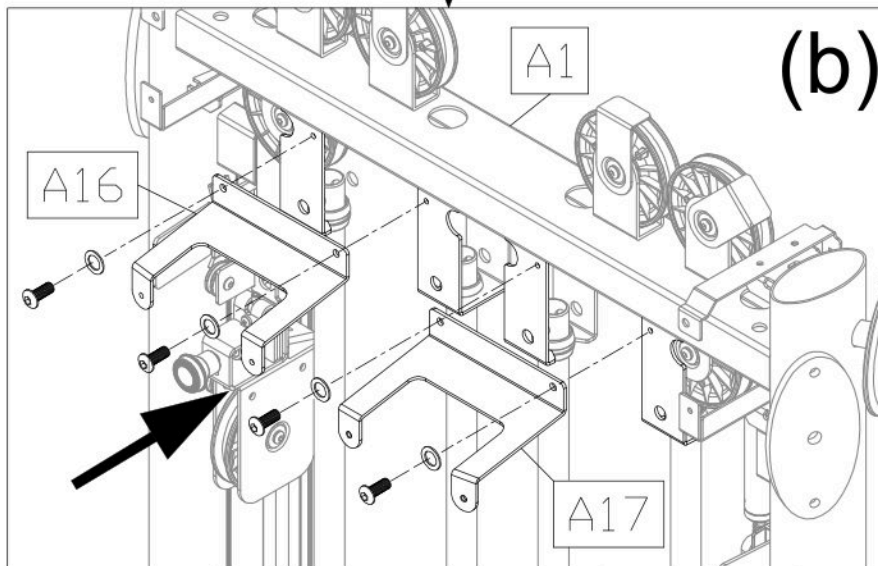
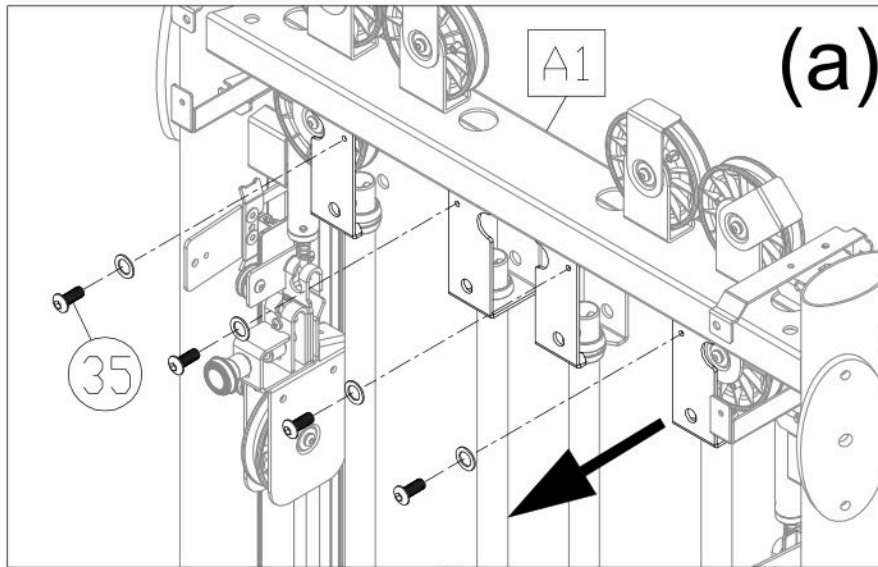
- (a) Align and tape the cardboard to the upper left corner of the weight stack.
- (b) Peel off the top half of the weight stack sticker (A22) backing.
(Note: Leave the clear outside margin in place on the sticker. Don't peel off the margin.)
- (c) Align the weight stack sticker (A22) with the right side of the cardboard and the top of the weight stack and then apply the sticker.
- (d) When the stickers are in place, peel off the cardboard.
(Note: Press the sticker in place to ensure good contact on the weight plate.)



STEP 7 Install Front Cover Set Brackets

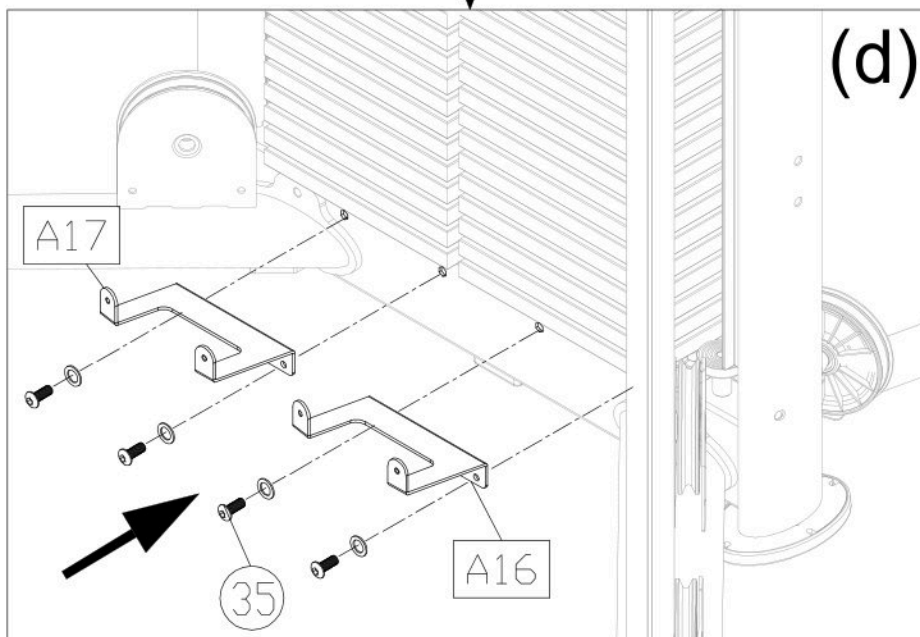
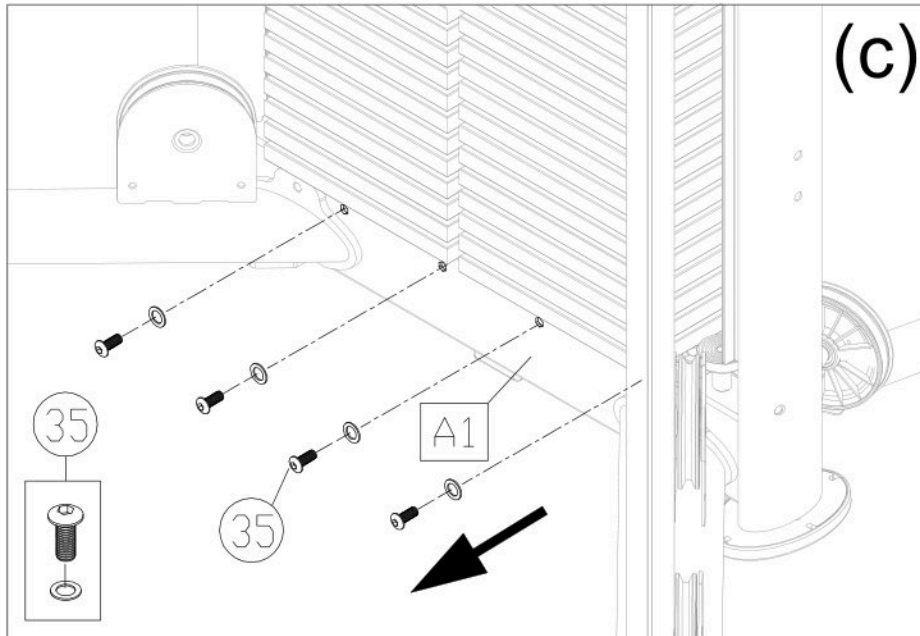
- (a) Remove screws (35) from the main frame (A1).
- (b) Align the holes, use screws (35) to secure the front cover set bracket A (A16) and the front cover set bracket B (A17).

(Note: The front cover set brackets are side-specific. There's a left (A16) and a right (A17) front cover set bracket A/B. Make sure the front cover set brackets are installed with the correct side face down and in proper direction as below shown.)



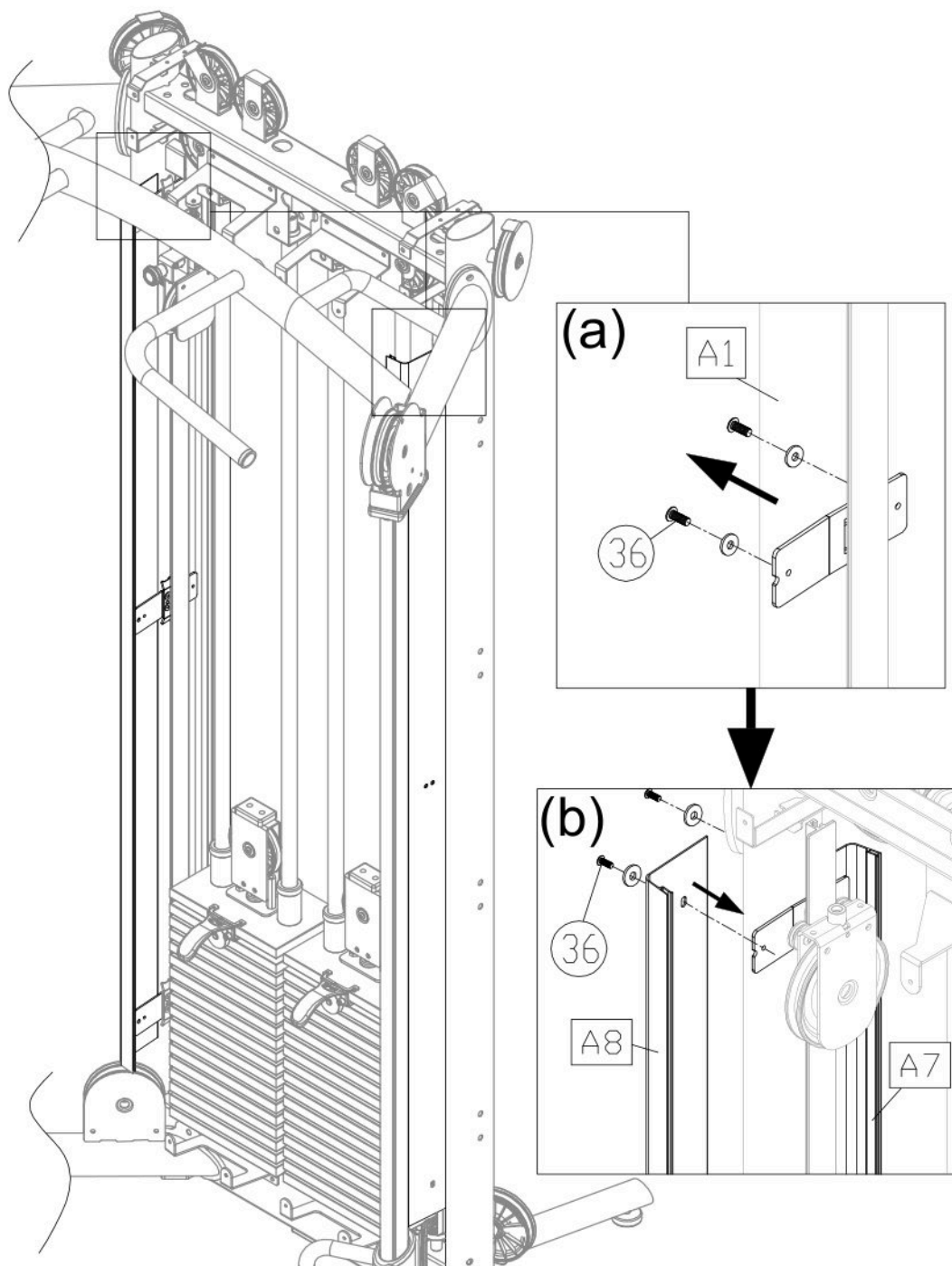
STEP 7 Install Front Cover Set Brackets (Continued)

- (c) Remove screws (35) from the bottom of the main frame (A1).
- (d) Align the holes, use screws (35) to secure the front cover set bracket A (A16) and the front cover set bracket B (A17).
- (Note: The front cover set brackets are side-specific. There's a right (A16) and a left (A17) front cover set bracket A/B. Make sure the front cover set brackets are installed with the correct side face up and in proper direction as below shown.)*



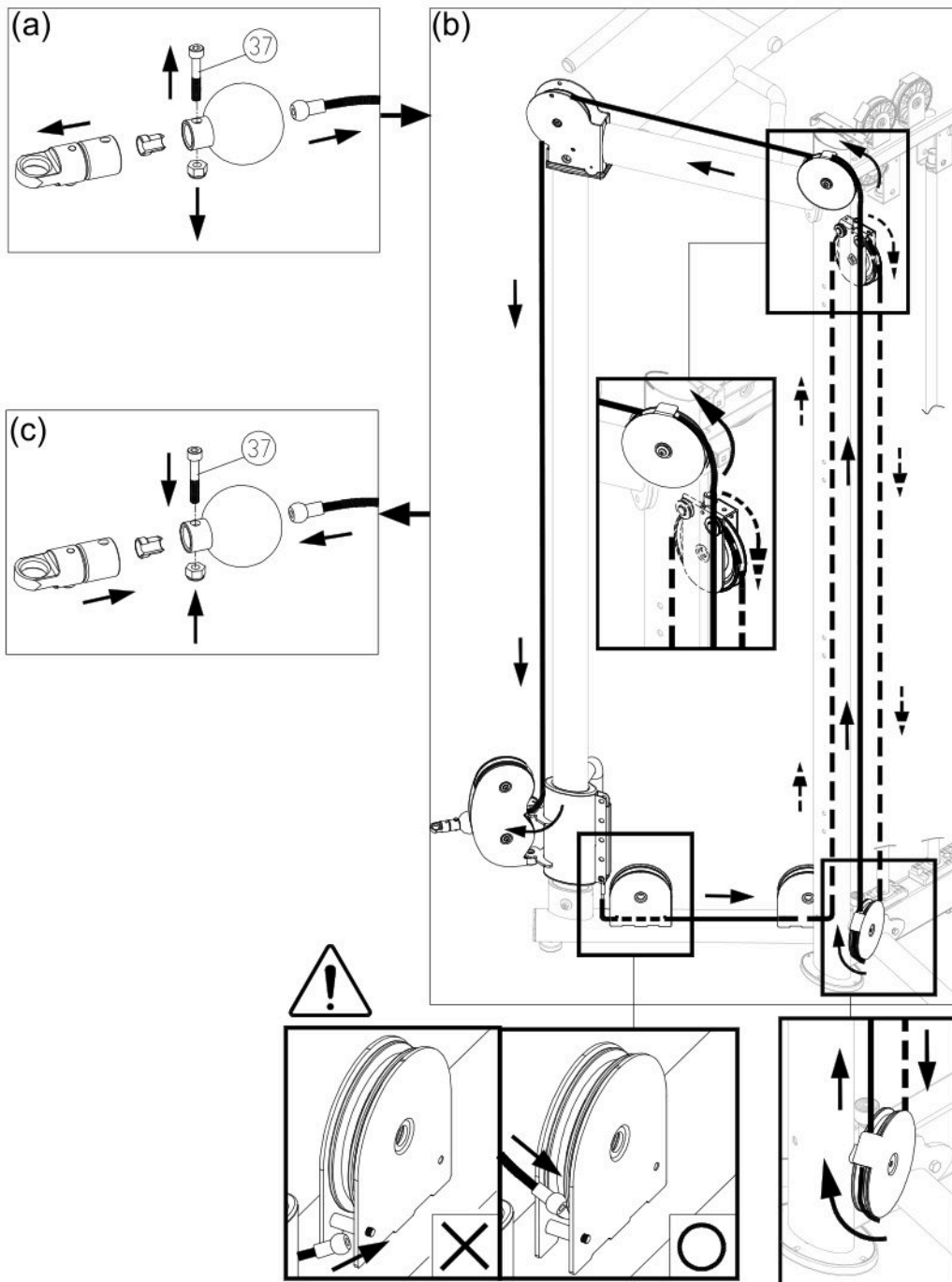
STEP 8 Install Front/Rear Cover Set Plate

- (a) Remove screws (36) from the main frame (A1).
- (b) Place the front cover set plate (A8) and rear cover set plate (A7) outside of the side tabs. Align the holes, use screws (36) to secure the front cover set plate (A8). And then use screws (36) to loosely secure the rear cover set plate (A7). Do not tighten screws yet.
(Note: Secure the front cover set plate from inside to outside.)



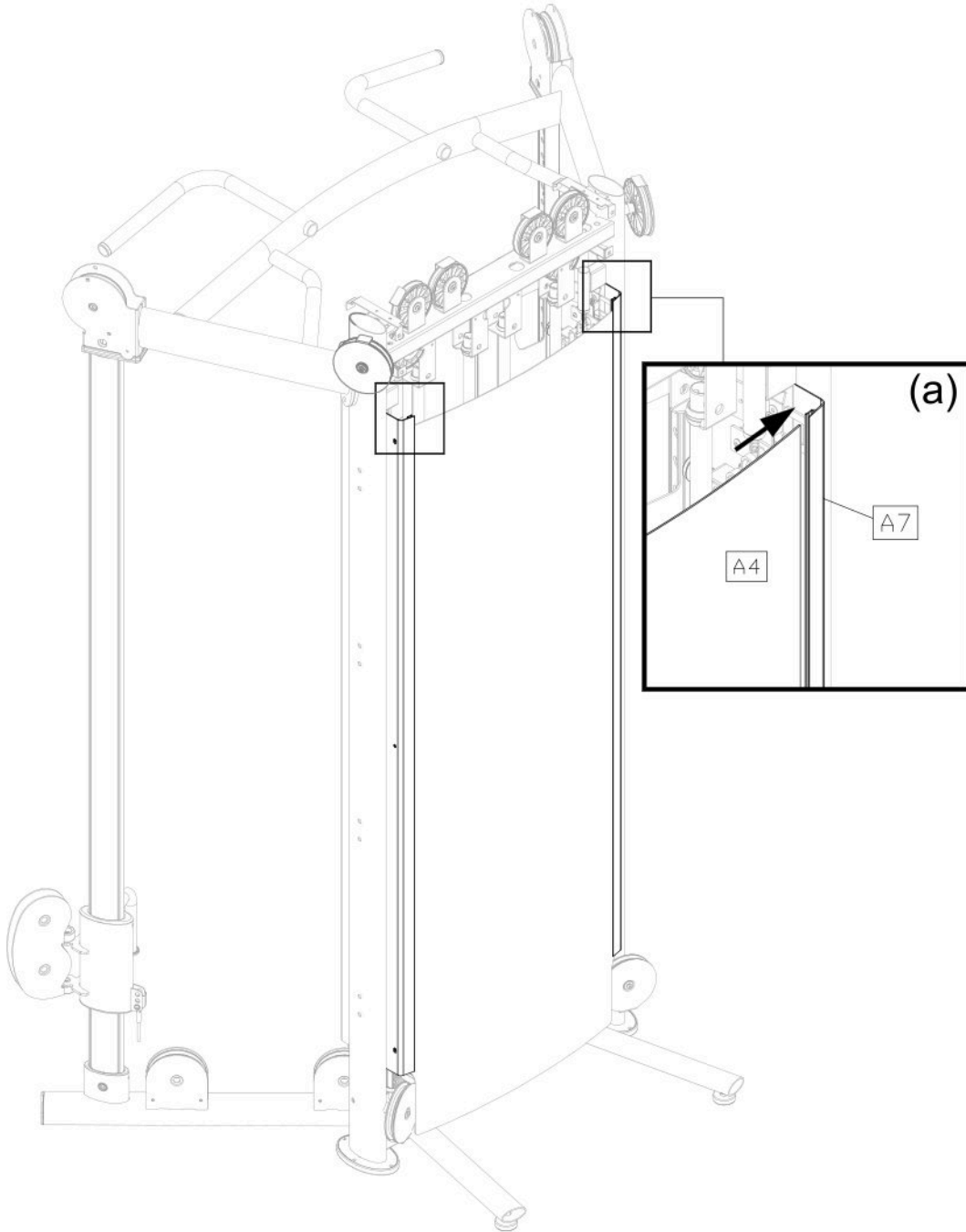
STEP 9 Install the Cable

- Remove screws (37) from the rubber ball on the connector assembly pulleys (A12) (A13) and then pull out the cable.
- Start from the bottom end of the connector assembly pulleys (A12) (A13) follow the direction of the arrows to install the cable. (*Note: Make sure the cable goes through the pulleys*).
- Once the cable went through all of the pulleys, use screws (37) to secure the rubber ball on the connector assembly pulleys (A12) (A13). Use the same procedure to install the other side.



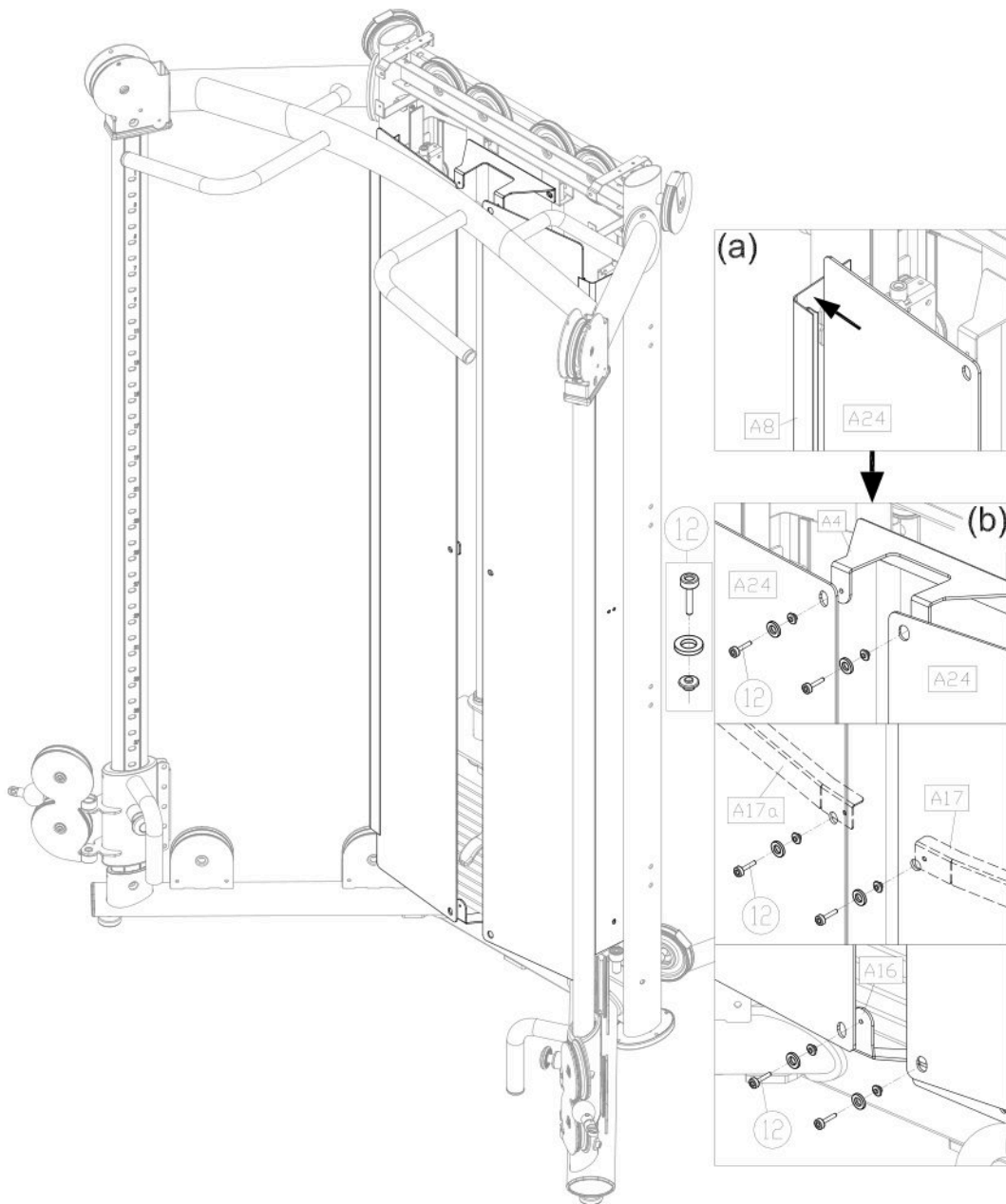
STEP 10 Install the Rear/Front Cover

- (a) Set the rear cover into the front cover set plate's groove (A7), and then align holes and fully tighten screws (36) of the rear cover set plate (A7).



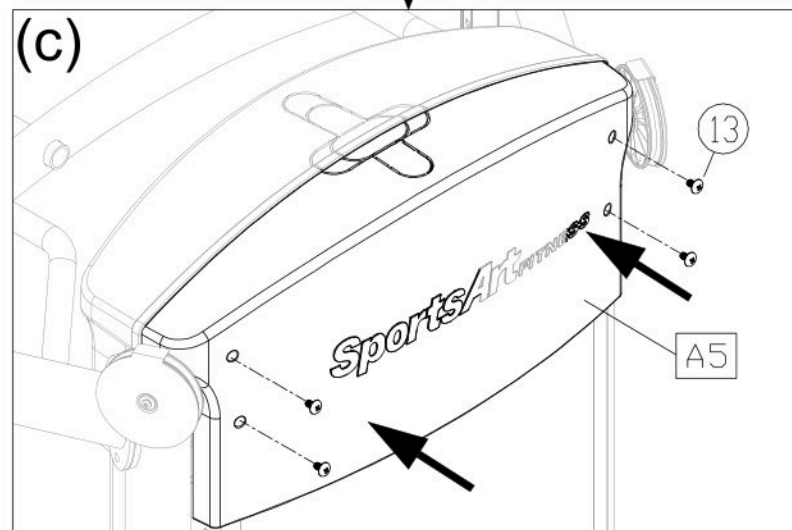
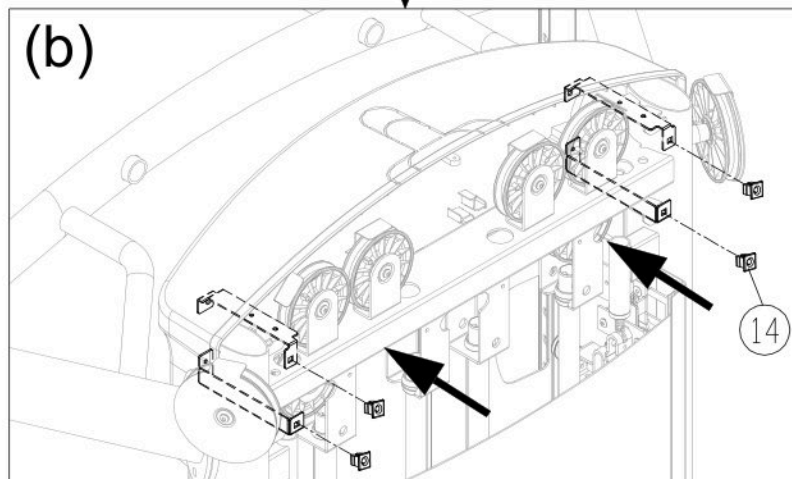
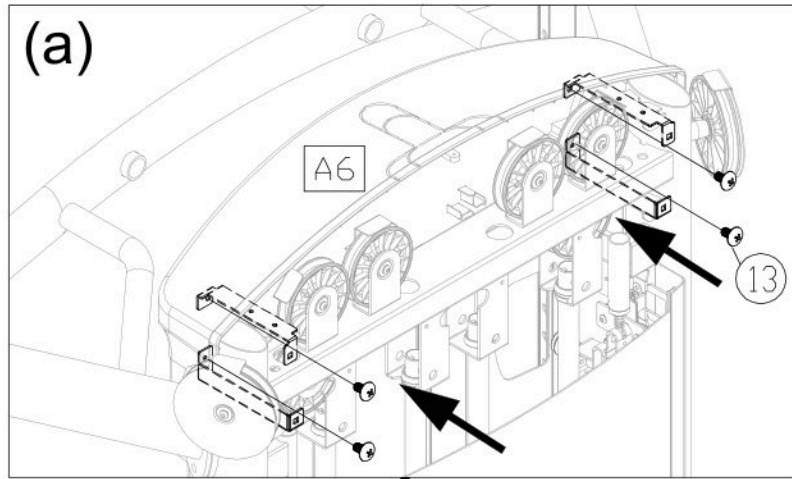
STEP 10 Install the Rear/Front Cover (Continued)

- (b) Set the front cover (A11) into the front cover set plate's groove (A8).
- (c) Align holes and secure 3 pieces of front covers (A11) with screws (12).



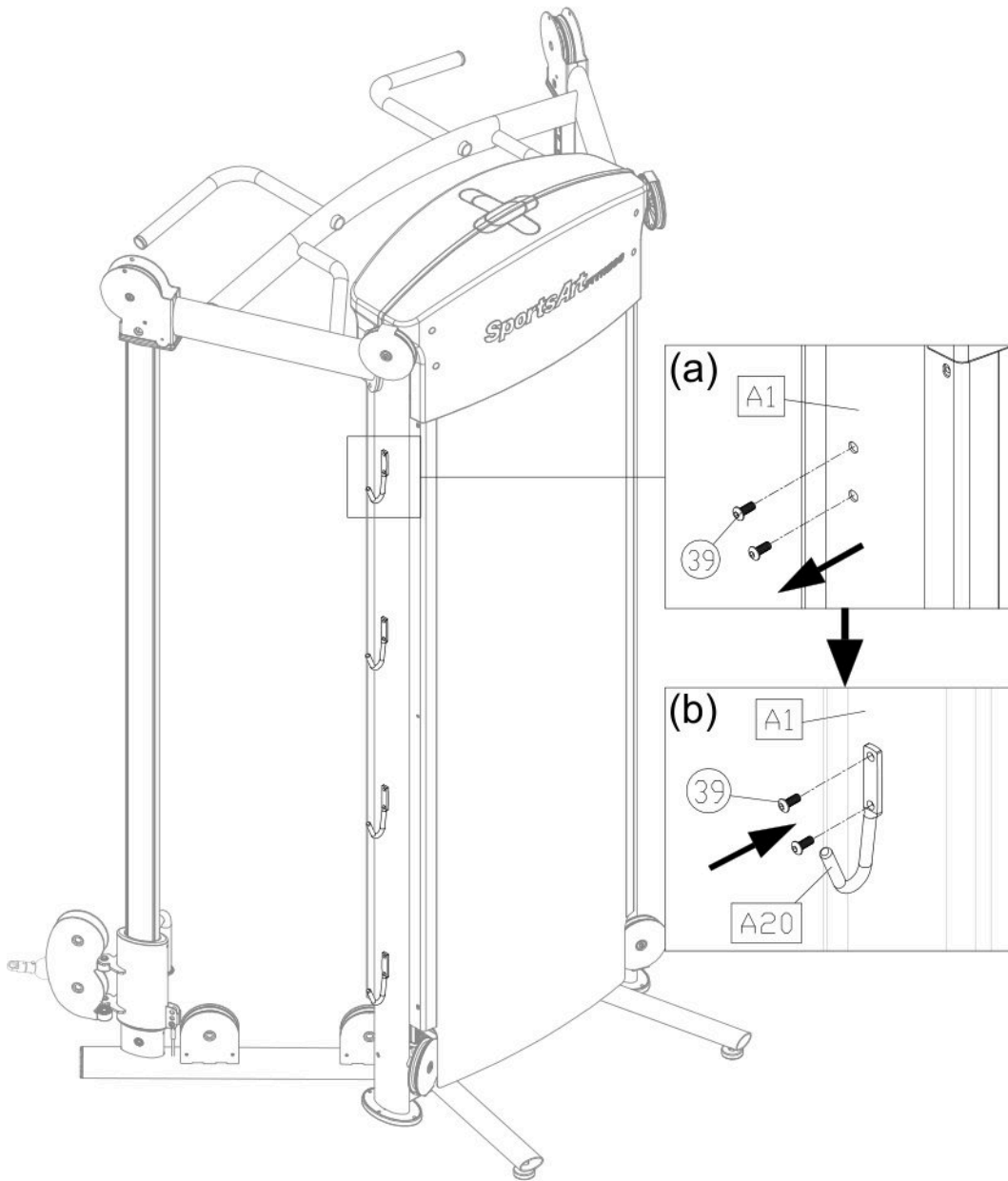
STEP 11 Install the Top Front/Rear Cover

- (a) Use screws (13) to secure the top front cover (A6) to the main frame (A1).
- (b) Press the screw sockets (14) into place on the frame where shown.
- (c) Use screws (13) to secure the top rear cover (A5) to the main frame (A1).



STEP 12 Install the Hooks

- (a) Remove screws (39) from the main frame (A1).
- (b) Use screws (39) to secure the hooks (A20) onto the main frame (A1).



STEP 13 Level and Secure the Product

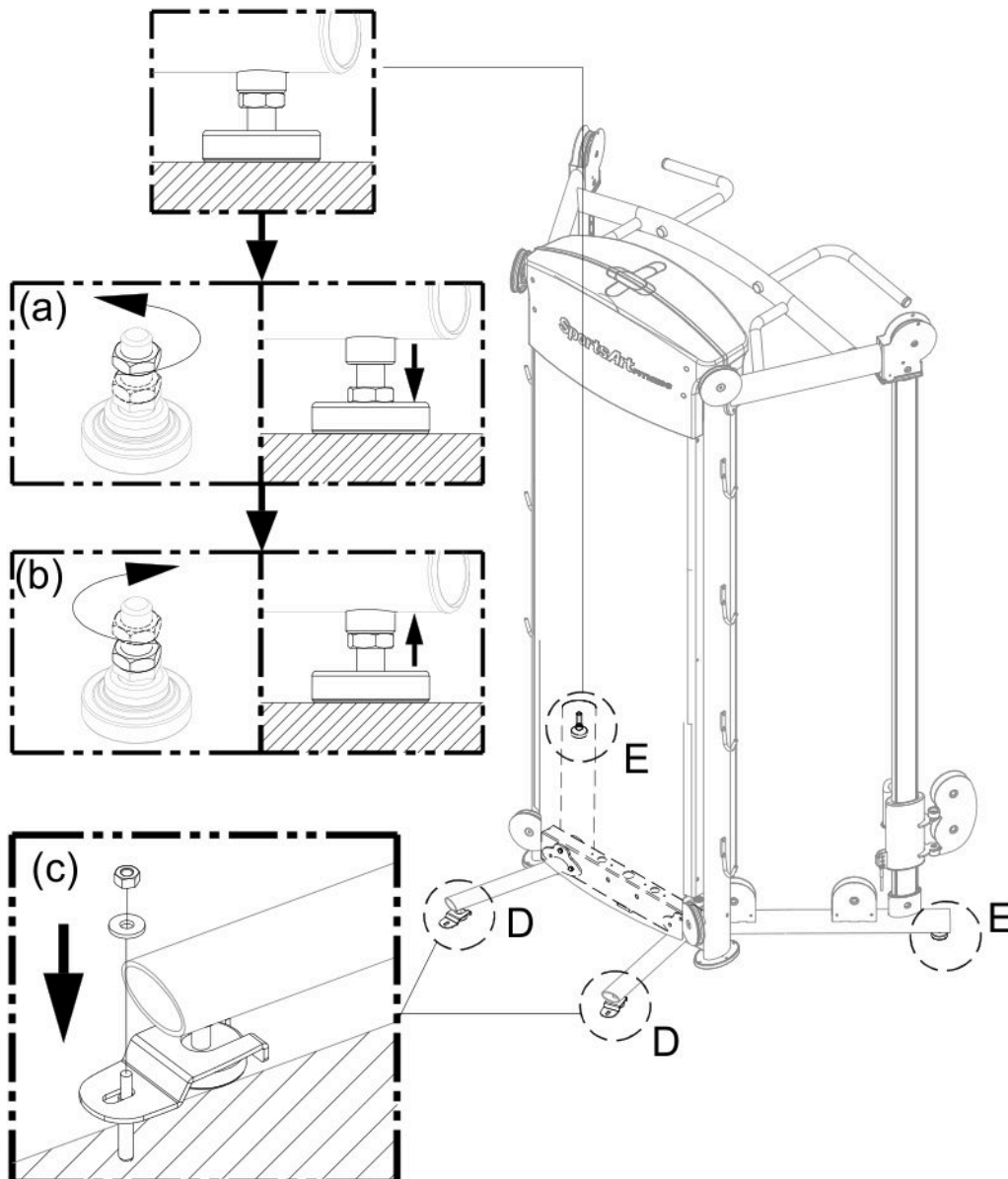
Follow instructions (a) through (c) below to level and secure the unit.

(Note: Adjust the leveler nut at area D first, then area E.)

- (a) Loosen the leveler nut and then rotate the leveler downward so it firmly touches the floor.
- (b) Once the machine is leveled, secure the leveler nut upward against the product frame.
- (c) Secure the floor fixing bracket (15) to the floor with the floor fixing bolt, nut and washer as shown to make sure the machine is firmly fixed to the floor when operating. *(Note: Level the machine before securing the floor fixing bolt.)*

(Note: The screw hole of floor fixing bracket is $\varnothing 9\text{mm}$, please make sure using the suitable floor fixing bolt and drilling the proper hole on the floor.)

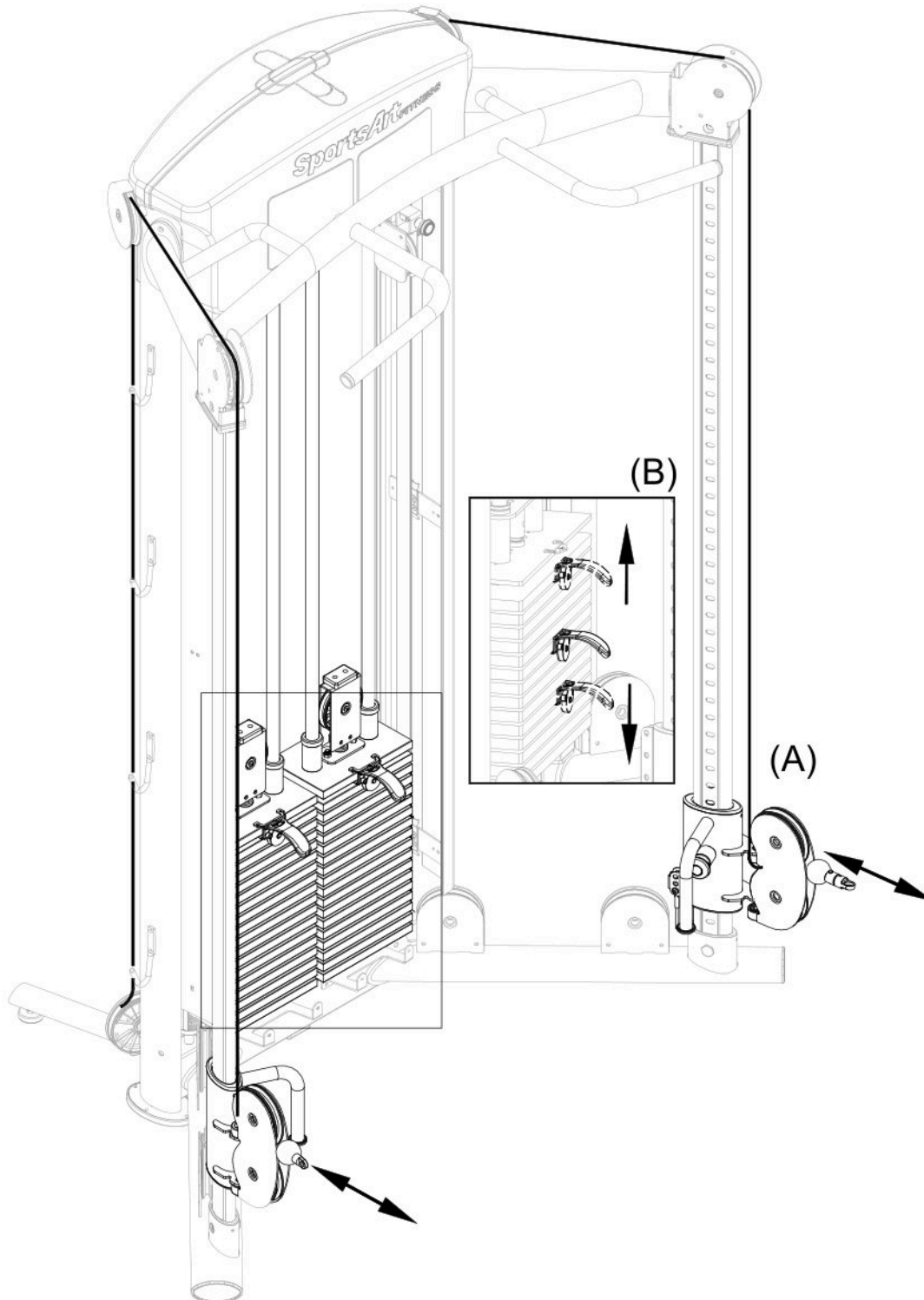
Note: Secure the floor fixing brackets at area D only and make sure they are secured in proper direction as shown.



5. OPERATE THE PRODUCT

OPERATION Test the Product

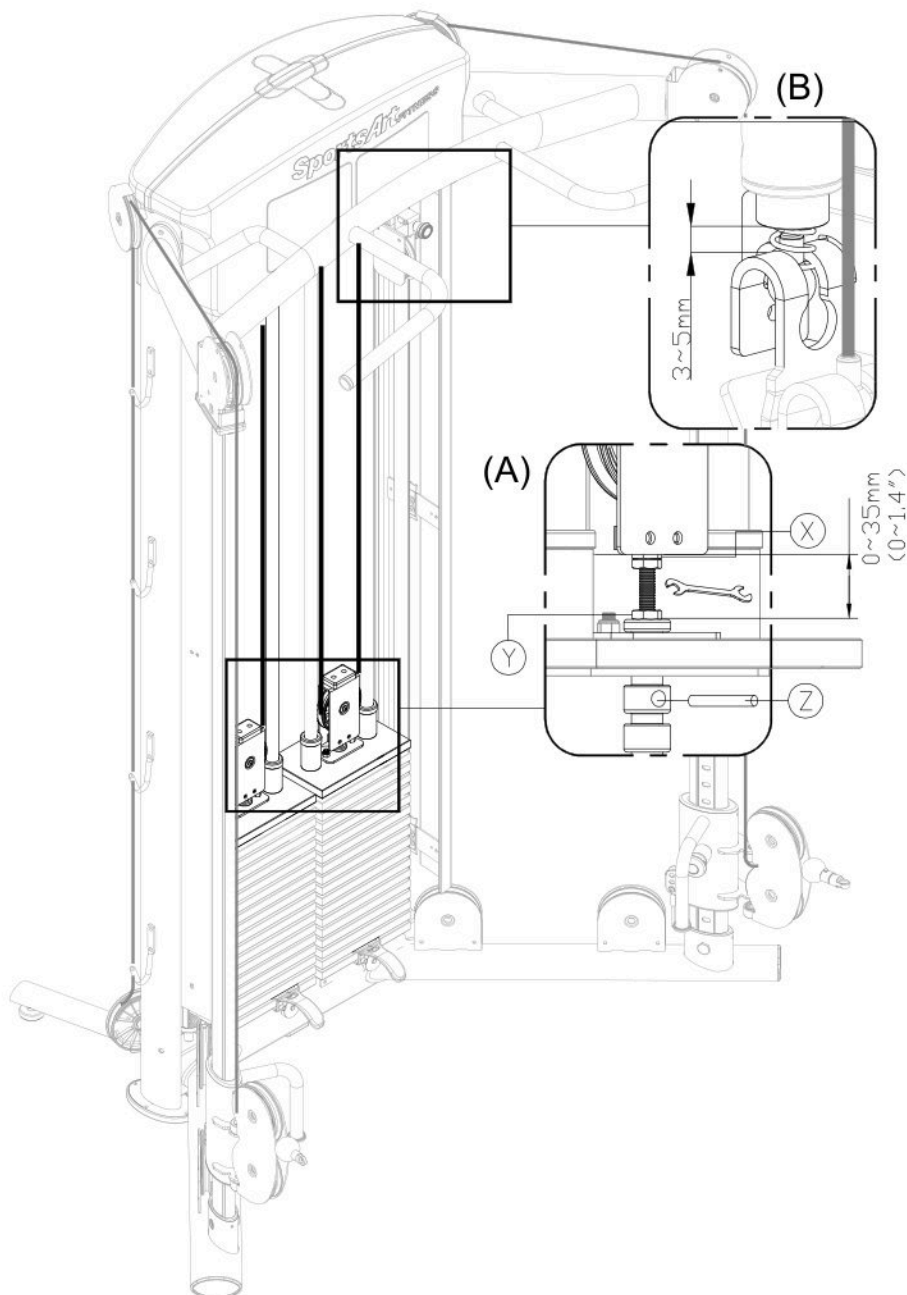
- (a) Test both pulley handles to confirm they operate correctly.
- (b) Insert each stack fork to make sure that every weight plate can be engaged easily.



OPERATION Test the Product (Continued)

(c) Insert each stack fork into the gap under the lowest weight plate. Make sure the gap at area B is between 3~5mm as shown when adjusting. Adjust the nut at area A until the upper stack carriage moves slightly. The gap between the (X) and (Y) nut must be within 35mm(1.4") and the (X) nut must be secured to a depth of 20mm. If the gap exceeds the 35mm limit, the cable needs to be adjusted to the proper length to avoid it's come off.

To adjust the cable, first insert an open end wrench into (Z) hole. Loosen (Y) nut and then adjust (X) nut. If the cable is too long, adjust (X) nut downward. If too short, adjust (X) nut upward. After adjusting (X) nut, tighten (Y) nut against the weight stack to secure this position.

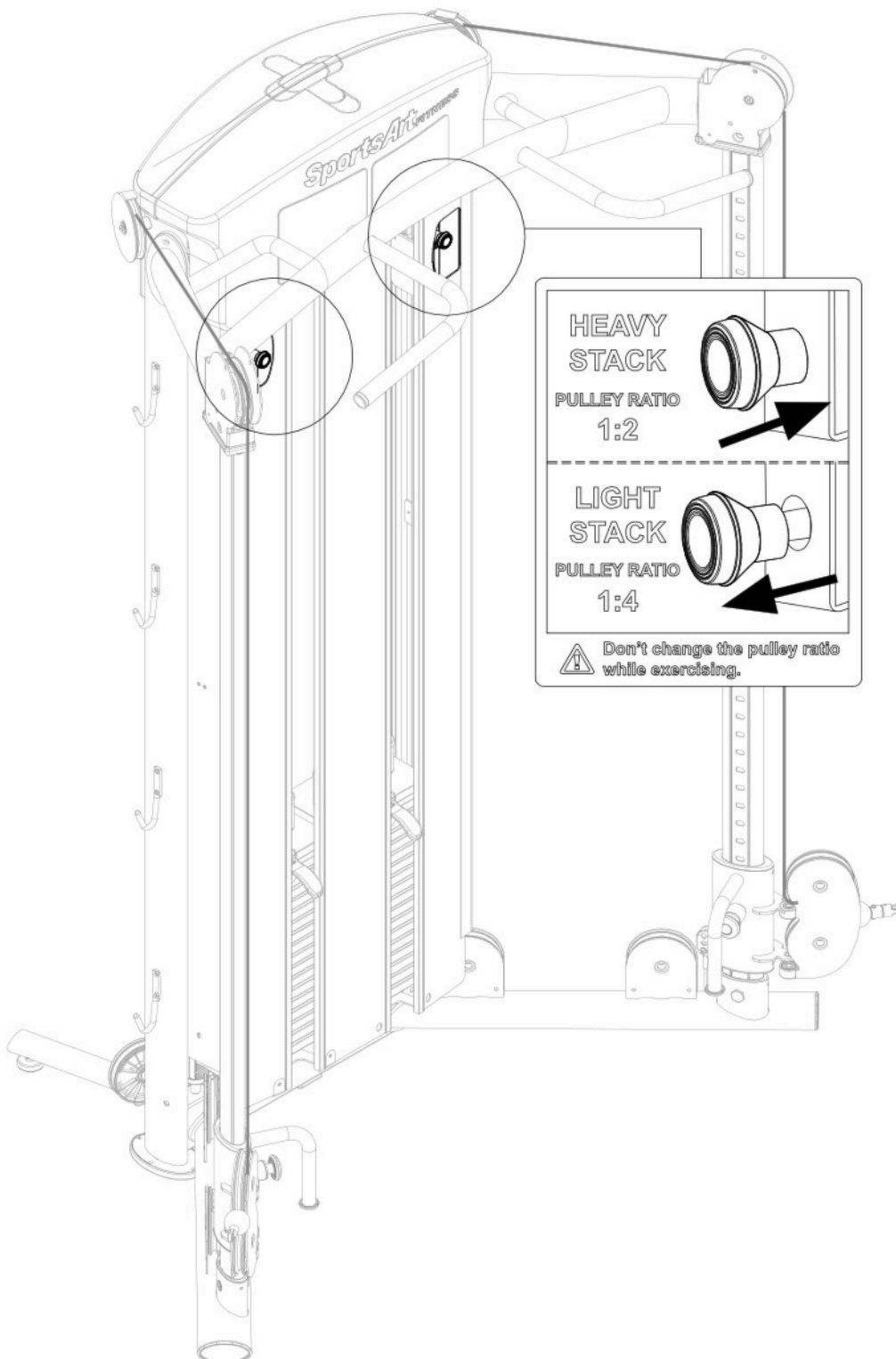


OPERATION Operate the Product

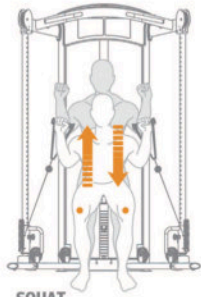
When the knob is pressed, the actual weight being lifted is configured at a ratio of 2:1. Example: If the stack fork is engaged at 60KG (132LB) at the weight stack, the actual pulling weight is 30KG (66LB).

Pull out the knob, the user has a 4:1 ratio and the 60KG (132LB) selected at the weight stack provides an actual pulling weight of 15KG (33LB).

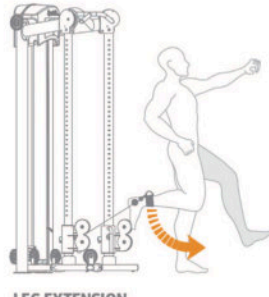
(Note: Do not change the pulley ratio while exercising.)



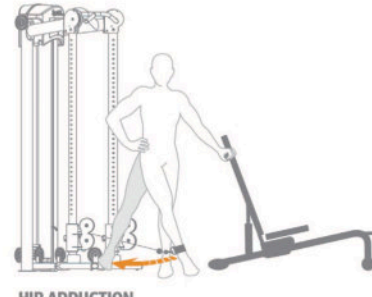
OPERATION Exercising Instructions



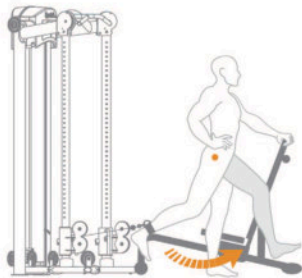
SQUAT



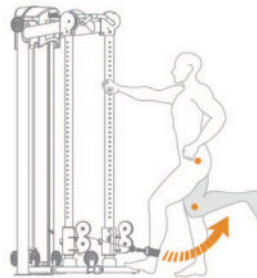
LEG EXTENSION



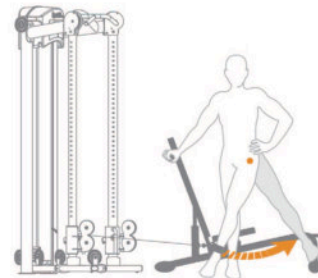
HIP ADDUCTION



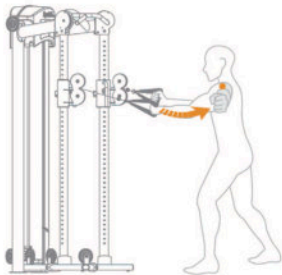
HIP EXTENSION



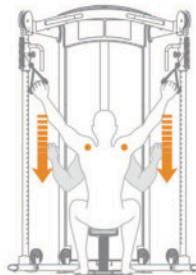
LEG CURL



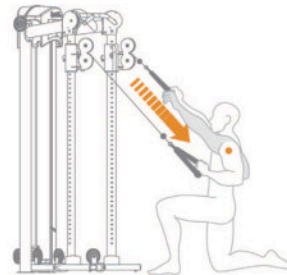
HIP ABDUCTION



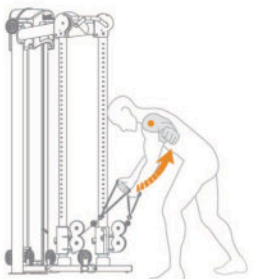
REVERSE FLY



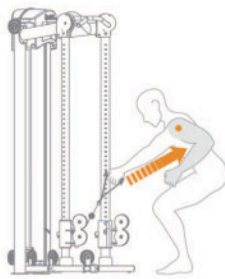
LAT PULL



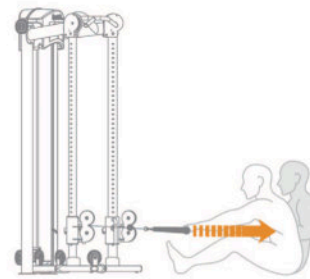
ALTERNATING KNEELING WIDE GRIP PULL-DOWN



CLOSE GRIP REVERSE DELTOID FLY

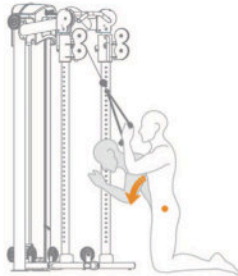


SINGLE ARM BENT ROW

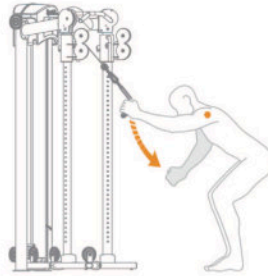


SEATED ROW WITH STRAIGHT BAR

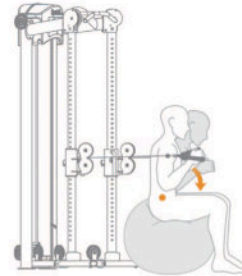
OPERATION Exercising Instructions (Continued)



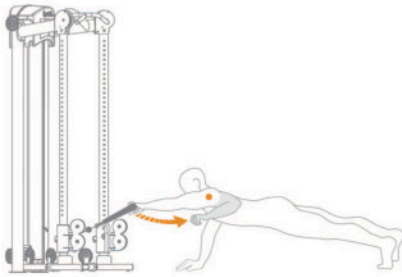
KNEELING CRUNCH



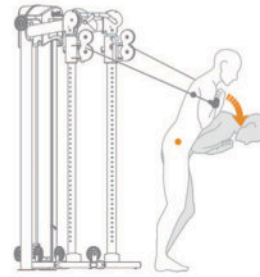
STANDING ROPE PULL



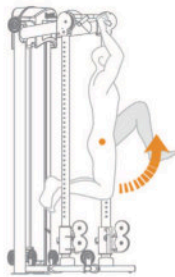
STABILITY BALL AB CRUNCH



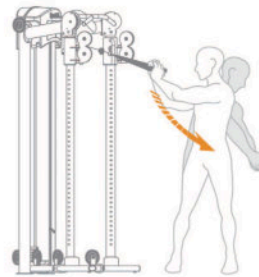
PLANK ONE ARM LAT PULLDOWN



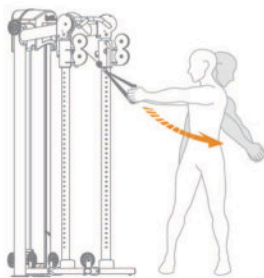
ABDOMINAL CRUNCH WITH STRAIGHT BAR



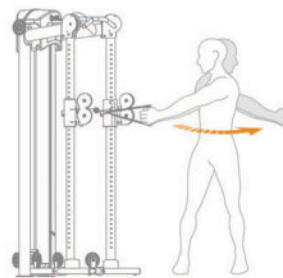
HANGING KNEE RAISE



HIGH TO LOW WOOD CHOP

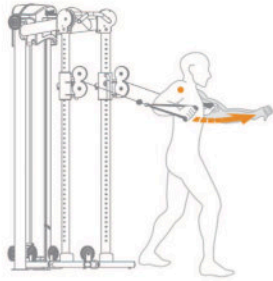


HIGH TO LOW ROTATION

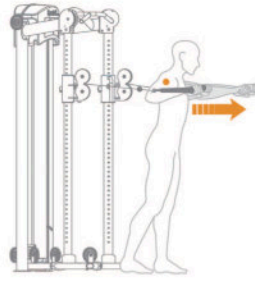


TORSO ROTATION

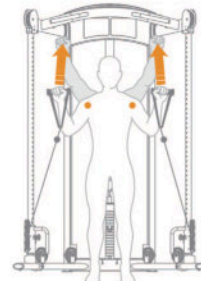
OPERATION Exercising Instructions (Continued)



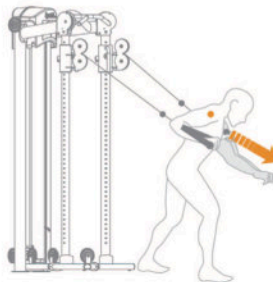
CHEST FLY



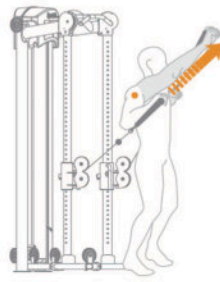
CHEST PRESS



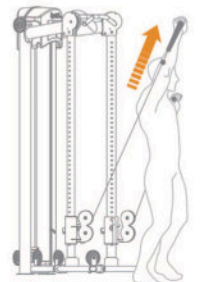
OVERHEAD PRESS



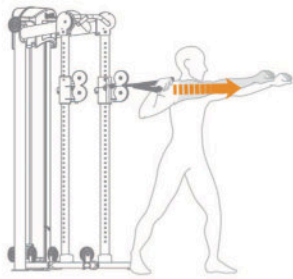
DECLINE CHEST PRESS



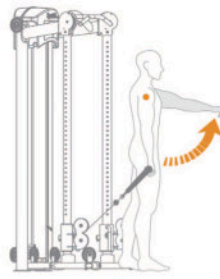
ALTERNATING INCLINE PRESS



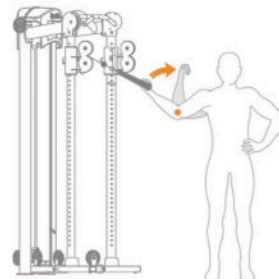
ALTERNATING SHOULDER PRESS



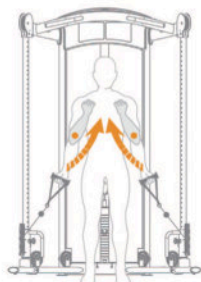
OVERHAND THROW



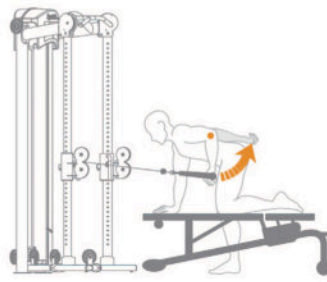
SHOULDER RAISE



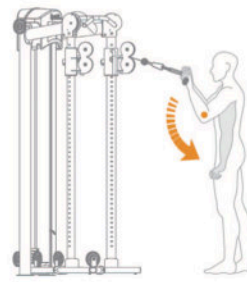
SINGLE ARM CURL



ARM CURL



SINGLE ARM TRICEP EXTENSION



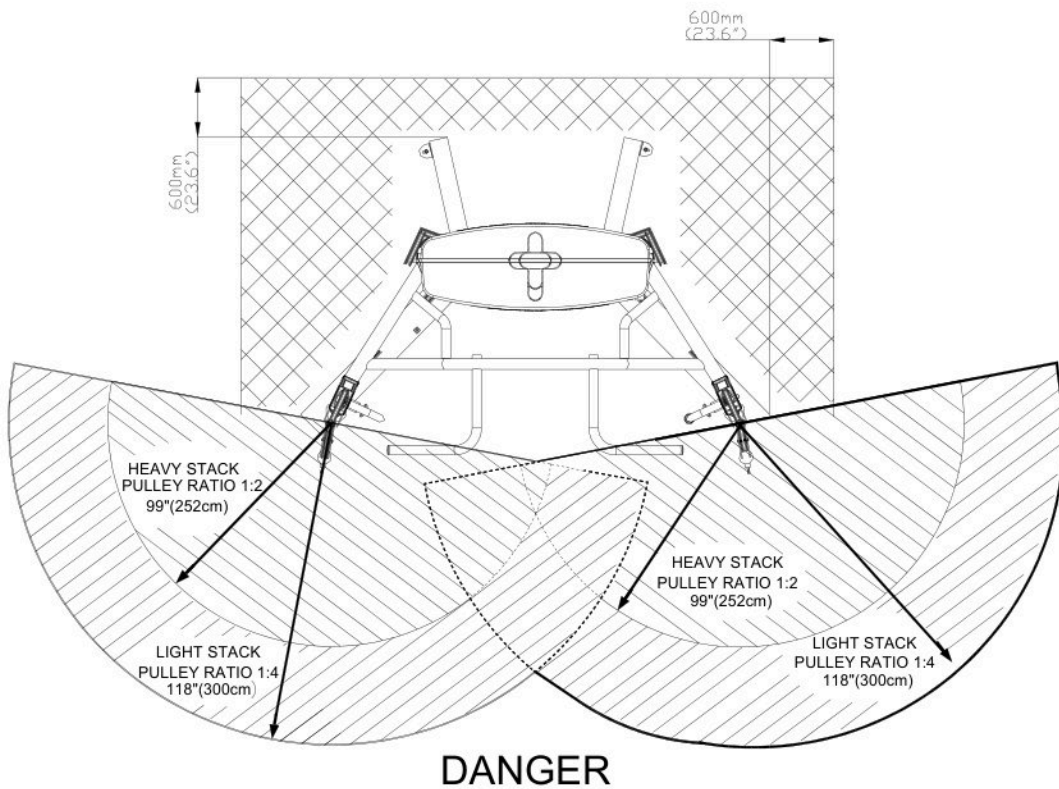
ARM EXTENSION

OPERATION Safety Operating Area

To avoid the unit fall down due to it is quite high, make sure operate it in safety area as shown. (Heavy stack pulley ratio 1:2 99" (252cm) ; Light stack pulley ratio 1:4 118" (300cm).) Safety clearance (600mm) required as below shown. Do not allow people to be near this area when operating.

And do not drastic pull the handle suddenly even in safety operating area.

(Note: Please refer page 23 to secure the floor fixing bracket properly to make sure the machine is firmly fixed to the floor when operating for safety.)



6. MAINTENANCE

This section covers maintenance topics and includes a maintenance schedule, task list, and log.

MAINTENANCE Safety Precautions

- Please follow standard safety precautions when servicing on this product.
- Must be performed by trained service personnel only.
- Do NOT use a damp towel to clean the product and do perform the following maintenances.
- Do NOT use cleaners with alcohol, ammonia, or other damaging chemicals. The use of such chemicals can damage the product and void the warranty. Never spray or pour any liquid directly onto the product. Doing so can damage electronic components and void the warranty.
- Use a clean, lint-free towel, dampened with a mixture of Simple Green® all-purpose cleaner, to thoroughly clean the handlebar and the console.
- This product has moving parts that can be hazardous. Exercise caution when maintaining, operating, or moving this product.
- Do NOT use accessories or parts that are not specifically recommended by the manufacturer (SportsArt) . Such parts might cause injuries or cause the unit to fail and void the warranty. We will not be responsible for any safety issue that arises due to the misuse of accessories or parts. At the same time, we will terminate the warranty terms of this equipment.
- Maintenance and repair must be performed by trained service personnel only.

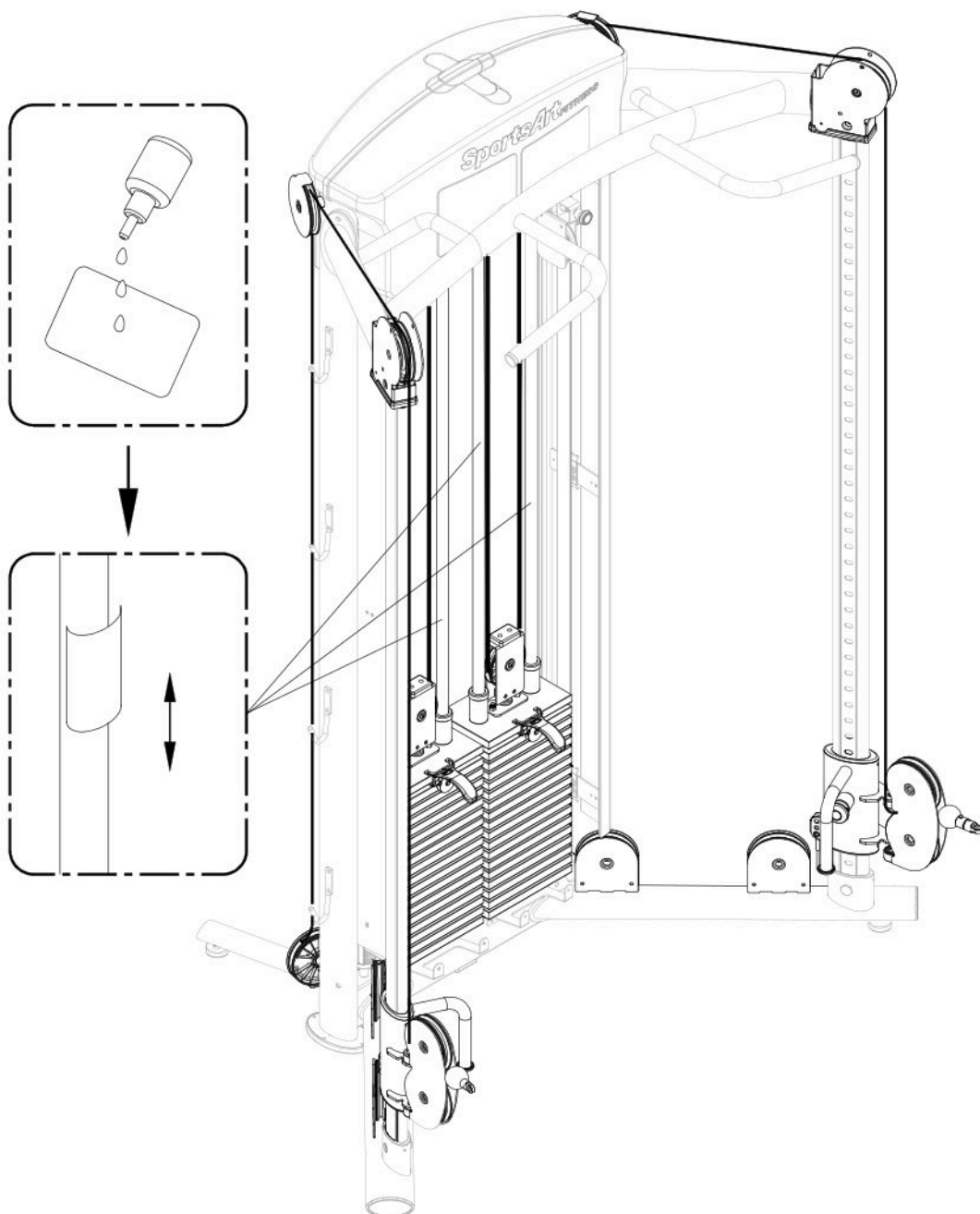
Maintenance **Guide Rod Cleaning and Lubricating**

1. Apply lubricant to the guide rods every 3 months.

Procedure:

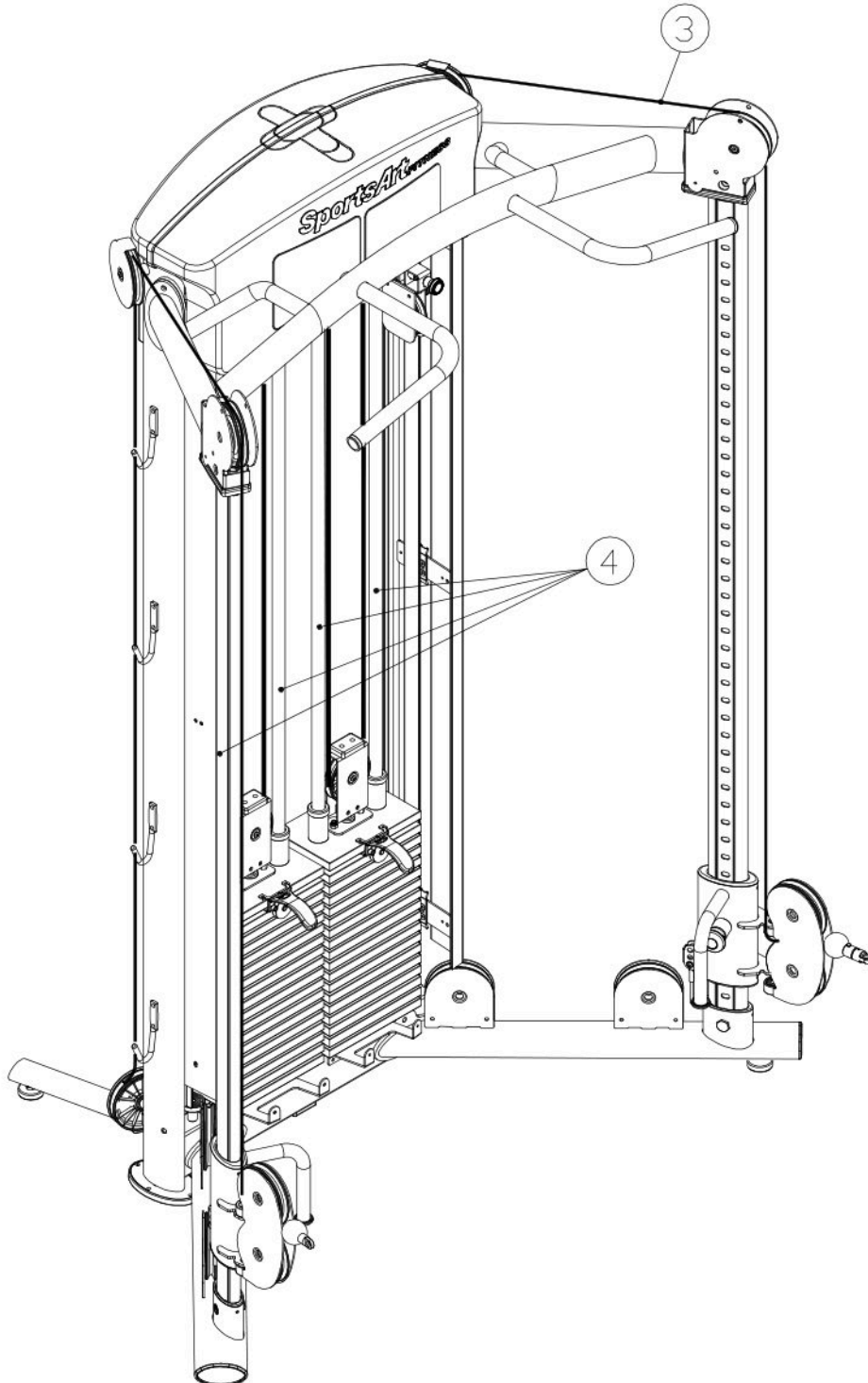
- (a). Put some lubricant on a clean, lint-free cloth. Rub the lubricated cloth on the guide rods.
- (b). Load the upper stack carriage set. Exercise to test operation.
- (c). Repeat steps (a) and (b) 2-3 times. (*Note: the cloth should be lint-free.*)

2. After lubricating the guide rods, inspect cable tightness. Refer to the manual, and adjust it if necessary.



MAINTENANCE Schedule

	Area	Day	Week	Month	Quarter	Year	Notes
1	Exterior	•					Clean.
2	Screws	•					Inspect for looseness and tighten if necessary.
3	Cable	•					Inspect for wear.
4	Guide rods				•		Clean and lubricate.



MAINTENANCE Task List

Like cars, fitness products require maintenance. Regular maintenance extends product life, and failure to maintain products can void the manufacturer's warranty. Copy the maintenance log sheet, and record maintenance work for each fitness product.

Daily tasks

1. Use a clean, lint-free towel, dampened with a mixture of Simple Green® all-purpose cleaner and water, to thoroughly clean the product exterior.
2. Inspect parts for looseness, and secure all loose screws. Make sure that the product is safe for operation. If safety issues arise, place an "Out of Order" sign on the product, and call for service.
3. Inspect belts or cables (as applicable) for wear and breakage. Replace belts once every four years.

Quarterly tasks

1. Clean and apply lubricant to the guide rods every three months.

MAINTENANCE One-Year Maintenance Log

Facility: _____ Supervisor: _____

Product model number: _____ Serial number: _____

Start date: _____ End date: _____

Daily Tasks	Weeks 1-7	Weeks 8-14	Weeks 15-21	Week 22-28
Completed	<input type="checkbox"/>	<input type="checkbox"/>	<input type="checkbox"/>	<input type="checkbox"/>

Daily Tasks	Week 29-35	Week 36-42	Week 43-49	Week 50-52
Completed	<input type="checkbox"/>	<input type="checkbox"/>	<input type="checkbox"/>	<input type="checkbox"/>

Weekly Tasks	Weeks 1-7	Weeks 8-14	Weeks 15-21	Weeks 22-28
Completed	<input type="checkbox"/>	<input type="checkbox"/>	<input type="checkbox"/>	<input type="checkbox"/>

Weekly Tasks	Weeks 29-35	Weeks 35-42	Weeks 43-49	Weeks 50-52
Completed	<input type="checkbox"/>	<input type="checkbox"/>	<input type="checkbox"/>	<input type="checkbox"/>

Monthly tasks	1	2	3	4	5	6	7	8	9	10	11	12
Completed	<input type="checkbox"/>	<input type="checkbox"/>	<input type="checkbox"/>	<input type="checkbox"/>	<input type="checkbox"/>	<input type="checkbox"/>	<input type="checkbox"/>	<input type="checkbox"/>	<input type="checkbox"/>	<input type="checkbox"/>	<input type="checkbox"/>	<input type="checkbox"/>

Quarterly Tasks	Quarter 1	Quarter 2	Quarter 3	Quarter 4
Completed	<input type="checkbox"/>	<input type="checkbox"/>	<input type="checkbox"/>	<input type="checkbox"/>

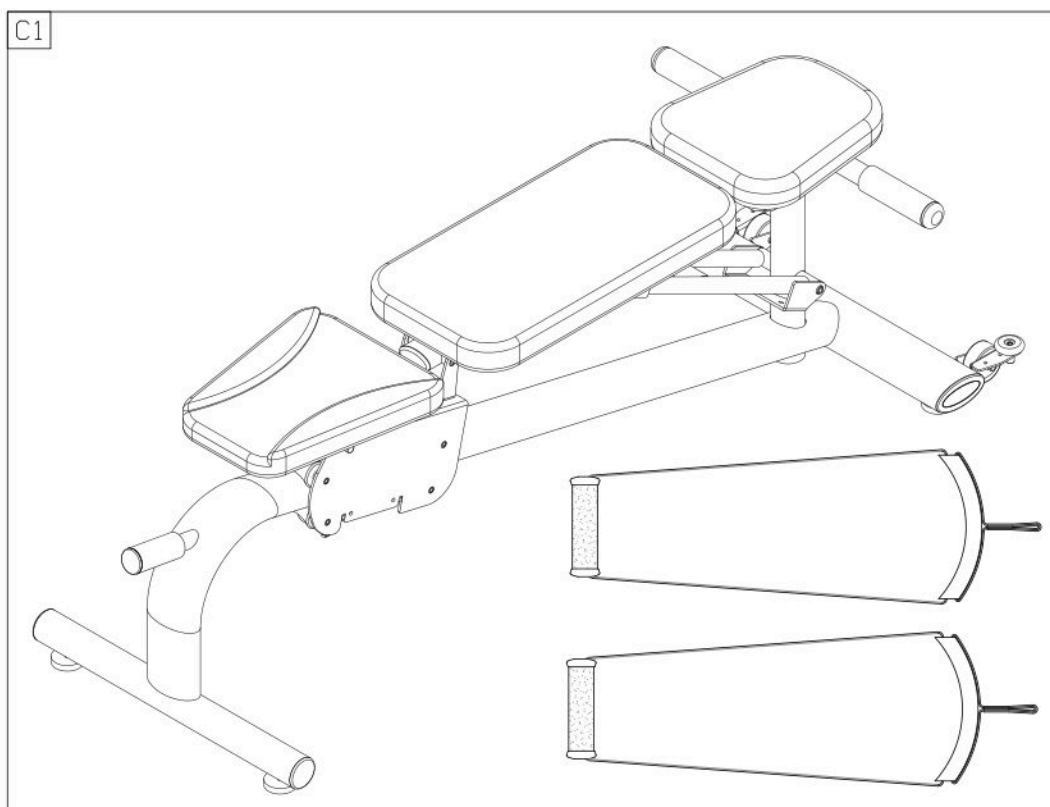
Yearly Tasks	Year 1
Completed	<input type="checkbox"/>

Notes: _____

7. ACCESSORIES

ACCESSORIES Options

Options					
No.	Name	Qty.	No.	Name	Qty.
C1	A93 bench + D handle	1	C3	Optional weight stacks	4
C2	Horn handle	1			



8. CONSIGNES DE SÉCURITÉ IMPORTANTES

Le produit SportsArt a été conçu et fabriqué afin d'assurer une sécurité optimale. Cependant certaines précautions s'appliquent chaque fois que vous utilisez votre produit.

- Lisez entièrement le manuel avant l'assemblage et l'utilisation. Veuillez aussi noter les consignes de sécurité suivantes:
- Veuillez lire attentivement les instructions et installer le produit selon les instructions.
- Assemblez et faites fonctionner le produit sur une surface solide et plane; NE PAS l'utiliser à l'extérieur ou près de l'eau.
- En aucun cas, ne laissez des enfants à proximité ou sur le produit.
- Vérifiez le tapis de course avant chaque utilisation. Assurez-vous que toutes les pièces sont assemblées et que tous les éléments de fixation sont serrés. NE PAS utiliser le produit si l'appareil est démonté de quelque façon.
- Gardez vos mains loin des pièces mobiles.
- Portez des vêtements d'entraînement appropriés; NE PORTEZ PAS de vêtements amples. NE PORTEZ PAS de chaussures à semelles en cuir ou à talons hauts. Attachez les cheveux longs.
- Soyez prudent lors du montage et démontage de l'appareil.
- NE PAS utiliser d'accessoire non spécifiquement recommandé par le fabricant. Car cela pourraient provoquer des blessures ou entraîner une panne de l'appareil.
- Débranchez l'appareil de la prise avant l'entretien ou la suppression de toute pièce.
- Une surveillance étroite est nécessaire quand le produit est utilisé par ou à proximité d'enfants, de malades ou de personnes handicapées.
- Utilisez ce produit uniquement pour l'usage prévu dans ce manuel.
- La limite de poids de l'utilisateur pour le produit est de 227 kg, 500 lb.
- Ce produit n'est pas destiné à être utilisé par des personnes (y compris des enfants) dont les capacités physiques, sensorielles ou mentales sont réduites ou qui ne disposent pas de l'expérience ou du savoir nécessaires, sauf si celles-ci ont au préalable été formées eu égard à l'utilisation de produit par une personne responsable de leur sécurité.
- Les enfants doivent être encadrés afin d'empêcher qu'ils ne jouent avec le produit.
- Ce produit n'est pas destiné à être utilisé par des personnes (y compris des enfants) dont les capacités physiques, sensorielles ou mentales sont réduites ou qui ne disposent pas de l'expérience ou du savoir nécessaires, sauf si celles-ci ont au préalable été formées eu égard à l'utilisation de ce produit par une personne responsable de leur sécurité.
- Les enfants doivent être encadrés afin d'empêcher qu'ils ne jouent avec le produit.

ATTENTION

Si vous ressentez une douleur ou si vous avez une sensation anormale, ARRÊTEZ VOTRE ENTRAÎNEMENT et consultez immédiatement votre médecin. Entraînez-vous à votre niveau d'exercice recommandé. NE PAS s'entraîner jusqu'à l'épuisement.

- Avant de commencer un programme d'exercice, vous devriez consulter votre médecin. Il est recommandé de faire un examen physique complet.

Dans ce manuel, les mots "gauche" et "droit" sont utilisés en référence aux pièces et au produit. Comme tels, les mots "gauche" et "droit" font respectivement référence aux côtés gauche et droit de l'exerciseur. De même pour plus de concision, le mot «vis» est utilisé dans certains cas où des rondelles, des vis et autres matériels sont associés.

Your Authorized Distributor